



**MORDIFORD C of E
PRIMARY SCHOOL**

Treasure each individual

NURTURE

INSPIRE

FLOURISH

Child Protection and Safeguarding Policy

“Treasure Each Individual”

Last Reviewed: September 2023



Contents

Statement of intent.....	4
Acronyms.....	6
Definitions	8
Legal framework	10
Roles and responsibilities	11
Multi-agency working	15
Abuse and neglect	16
FGM.....	18
Forced marriage.....	19
Child sexual exploitation (CSE).....	20
Child criminal exploitation (CCE).....	21
Mental health	21
Homelessness	22
County lines	22
Serious violence.....	23
Pupils with family members in prison	23
Pupils required to give evidence in court.....	24
Contextual safeguarding	24
Preventing radicalisation	24
Training.....	25
Risk indicators of vulnerable pupils	25
Making a judgement.....	26
Channel programme	27
Extremist speakers	27
Building children's resilience	28
Resources.....	28
A child missing from education.....	28
Admissions register.....	29
Pupils with SEND.....	30
Alternative provision.....	31
Work experience	31



Homestay exchange visits	31
Private fostering.....	32
Concerns about a pupil	32
Early help.....	33
Managing referrals	33
Concerns about staff members and safeguarding practices	34
Dealing with allegations of abuse against staff	35
Allegations of abuse against other pupils (child-on-child abuse)	35
Sexual harassment includes	35
A preventative approach	37
Awareness	37
Support available if a child has been harmed, is in immediate danger or at risk of harm	38
Support available if early help, section 17 and/or section 47 statutory assessments are appropriate.....	38
Support available if a crime may have been committed.....	38
Support available if reports include online behaviour	38
Managing disclosures	38
Confidentiality	39
Anonymity	40
Risk assessment.....	40
Taking action following a disclosure	40
Managing the report.....	41
Managing internally	42
Providing early help	42
Referral to CSCS	42
Reporting to the police	42
Bail conditions.....	43
Managing delays in the criminal justice system	43
The end of the criminal process	43
Ongoing support for the victim	44
Ongoing support for the alleged perpetrator.....	45
Disciplining the alleged perpetrator	45
Shared classes	46



Working with parents and carers	46
Safeguarding other children	47
Specific Safeguarding issues	47
Communication and confidentiality	47
Online safety	49
Mobile phone and camera safety	49
Upskirting.....	50
Sports clubs and extracurricular activities	51
Safer recruitment	51
Pre-employment checks.....	51
Internal candidates.....	52
ITT candidates	52
Governors	52
Those who have lived or worked outside of the UK.....	53
Barred list check	53
References	53
Volunteers.....	54
Associate members	54
Contractors	54
Data retention	54
Referral to the DBS	55
Ongoing suitability.....	55
Staff suitability.....	55
Training.....	56
Monitoring and review	57
Staff Disqualification Declaration.....	58
Safeguarding Reporting Process	60
Before a referral is made.....	60
After a referral is made.....	61
Specific safeguarding issues.....	62
Domestic abuse	62
LGBTQ+ pupils	63
Homelessness	63



Children missing from education	63
Admissions register.....	64
Child abduction and community safety incidents	65
Child criminal exploitation (CCE).....	66
County lines	66
Cyber-crime	67
Child sexual exploitation (CSE).....	67
Modern slavery	68
FGM.....	68
Virginity testing and hymenoplasty	70
Forced marriage.....	72
Radicalisation	74
The Prevent duty.....	74
Pupils with family members in prison	75
Pupils required to give evidence in court.....	75
Mental health	75
Serious violence.....	75
Contacts and Advice	76

Statement of intent

In line with our Christian vision Mordiford CE Primary School is committed to safeguarding and promoting the welfare, both physical and emotional, of every pupil both inside and outside of the school premises. We implement a whole-school preventative approach to managing safeguarding concerns, ensuring that the wellbeing of pupils is at the forefront of all action taken.

This policy sets out a clear and consistent framework for delivering this promise, in line with safeguarding legislation and statutory guidance.

It will be achieved by:

- Creating a culture of safer recruitment by adopting procedures that help deter, reject or identify people who might pose a risk to children.
- Teaching pupils how to keep safe and recognise behaviour that is unacceptable.
- Identifying and making provision for any pupil that has been subject to abuse.



- Ensuring that members of the governing board, the headteacher and staff members understand their responsibilities under safeguarding legislation and statutory guidance, are alert to the signs of child abuse and know to refer concerns to the DSL.
- Ensuring that the headteacher and any new staff members and volunteers are only appointed when all the appropriate checks have been satisfactorily completed.

The DSL is: Ed Sibcy. In the absence of the DSL, child protection matters will be dealt with by Sue Warmington. The named governor with responsibility for safeguarding is Mrs Chris Harris, Chair of Governors.

Signed by:

S.Warmington

Headteacher

Date:

C.Harris

Chair of governors

Date:



Acronyms

This policy contains a number of acronyms used in the Education sector. These acronyms are listed below alongside their descriptions.

Acronym	Long form	Description
CCE	Child criminal exploitation	A form of abuse where an individual or group takes advantage of an imbalance of power to coerce, manipulate or deceive a child into taking part in criminal activity in exchange for something the victim needs or wants, for the financial advantage or other advantage of the perpetrator or facilitator, and/or through violence or the threat of violence.
CSCS	Children's social care services	The branch of the local authority that deals with children's social care.
CSE	Child sexual exploitation	A form of sexual abuse where an individual or group takes advantage of an imbalance of power to coerce, manipulate or deceive a child into sexual activity in exchange for something the victim needs or wants, for the financial advantage, increased status or other advantage of the perpetrator or facilitator, and/or through violence or the threat of violence.
DBS	Disclosure and barring service	The service that performs the statutory check of criminal records for anyone working or volunteering in a school.
DfE	Department for Education	The national government body with responsibility for children's services, policy and education, including early years, schools, higher and further education policy, apprenticeships and wider skills in England.
DPO	Data protection officer	The appointed person in school with responsibility for overseeing data protection strategy and implementation to ensure compliance with the UK GDPR and Data Protection Act.
DSL	Designated safeguarding lead	A member of the senior leadership team who has lead responsibility for safeguarding and child protection throughout the school.
EEA	European Economic Area	The Member States of the European Union (EU) and three countries of the European Free Trade Association (EFTA) (Iceland, Liechtenstein and Norway; excluding Switzerland).



EHC plan	Education, health and care plan	A funded intervention plan which coordinates the educational, health and care needs for pupils who have significant needs that impact on their learning and access to education. The plan identifies any additional support needs or interventions and the intended impact they will have for the pupil.
ESFA	Education and Skills Funding Agency	An agency sponsored by the Department for Education with accountability for funding education and skills training for children, young people and adults.
FGM	Female genital mutilation	All procedures involving the partial or total removal of the external female genitalia or other injury to the female genital organs. FGM is illegal in the UK and a form of child abuse with long-lasting harmful consequences.
UK GDPR	UK General Data Protection Regulation	Legislative provision designed to strengthen the safety and security of all data held within an organisation and ensure that procedures relating to personal data are fair and consistent.
HBA	'Honour-based' abuse	So-called 'honour-based' abuse involves crimes that have been committed to defend the honour of the family and/or community.
HMCTS	HM Courts and Tribunals Service	HM Courts and Tribunals Service is responsible for the administration of criminal, civil and family courts and tribunals in England and Wales. HMCTS is an executive agency, sponsored by the Ministry of Justice.
IICSA	Independent Inquiry into Child Sexual Abuse	The Independent Inquiry into Child Sexual Abuse is analysing case files from the Disclosure and Barring Service to learn more about the behaviours of perpetrators who have sexually abused children in institutions, and to understand institutional responses to these behaviours.
KCSIE	Keeping children safe in education	Statutory guidance setting out schools and colleges' duties to safeguard and promote the welfare of children.
LA	Local authority	A local government agency responsible for the provision of a range of services in a specified local area, including education.
LAC	Looked-after children	Children who have been placed in local authority care or where children's services have looked after children for more than a period of 24 hours.
LGBTQ+	Lesbian, gay, bisexual,	Term relating to a community of people, protected by the Equality Act 2010, who identify as lesbian, gay,



	transgender and queer plus	bisexual or transgender, or other protected sexual or gender identities.
NPCC	The National Police Chiefs' Council	The National Police Chiefs' Council is a national coordination body for law enforcement in the United Kingdom and the representative body for British police chief officers.
PLAC	Previously looked-after children	Children who were previously in local authority care or were looked after by children's services for more than a period of 24 hours. PLAC are also known as care leavers.
PSHE	Personal, social and health education	A non-statutory subject in which pupils learn about themselves, other people, rights, responsibilities and relationships.
PHE	Public Health England	An executive agency of the Department of Health and Social Care which aims to protect and improve the nation's health and wellbeing.
RSHE	Relationships, sex and health education	A compulsory subject from Year 7 for all pupils. Includes the teaching of sexual health, reproduction and sexuality, as well as promoting positive relationships.
SCR	Single central record	A statutory secure record of recruitment and identity checks for all permanent and temporary staff, proprietors, contractors, external coaches and instructors, and volunteers who attend the school in a non-visitor capacity.
SENCO	Special educational needs coordinator	A statutory role within all schools maintaining oversight and coordinating the implementation of the school's special educational needs policy and provision of education to pupils with special educational needs.
SLT	Senior leadership team	Staff members who have been delegated leadership responsibilities in a school.
TRA	Teaching Regulation Agency	An executive agency of the DfE with responsibility for the regulation of the teaching profession.
VSH	Virtual school head	Virtual school heads are in charge of promoting the educational achievement of all the children looked after by the local authority they work for, and all children who currently have, or previously had, a social worker.

Definitions



The terms “**children**” and “**child**” refer to anyone under the age of 18.

For the purposes of this policy, “safeguarding and protecting the welfare of children” is defined as:

- Protecting pupils from maltreatment.
- Preventing the impairment of pupils’ mental and physical health or development.
- Ensuring that pupils grow up in circumstances consistent with the provision of safe and effective care.
- Taking action to enable all pupils to have the best outcomes.

For the purposes of this policy, the term “**harmful sexual behaviour**” includes, but is not limited to, the following actions:

- Using sexually explicit words and phrases
- Inappropriate touching
- Sexual violence or threats
- Full penetrative sex with other children or adults

In accordance with the DfE’s guidance, ‘Sexual violence and sexual harassment between children in schools and colleges’ (2018), and for the purposes of this policy, the term “**sexual harassment**” is used within this policy to describe any unwanted conduct of a sexual nature, both online or offline, which violates a child’s dignity and makes them feel intimidated, degraded or humiliated, and can create a hostile, sexualised or offensive environment.

For the purpose of this policy, the term “**sexual violence**” encompasses the definitions provided in the Sexual Offences Act 2003, including those pertaining to rape, assault by penetration and sexual assault.

For the purposes of this policy, “**upskirting**” refers to the act of taking a picture or video under another person’s clothing, without their knowledge or consent, with the intention of viewing that person’s genitals or buttocks (with or without clothing). Despite the name, anyone (including both pupils and teachers), and any gender, can be a victim of upskirting.

The term “**teaching role**” is defined as planning and preparing lessons and courses for pupils; delivering lessons to pupils; assessing the development, progress and attainment of pupils; and reporting on the development, progress and attainment of pupils. These activities are not teaching work if the person carrying out the activity does so (other than for the purposes of induction) subject to the direction and supervision of a qualified teacher or other person nominated by the headteacher to provide such direction and supervision.

For the purpose of this policy, “**child-on-child**” abuse is defined as abuse between children. This can include, but is not limited to the following:

- Abuse within intimate partner relationships
- Bullying (including cyberbullying)



- Sexual violence and sexual harassment
- Physical abuse and physical harm
- Sexting
- Initiation/hazing-type violence and rituals

Legal framework

This policy has been created with due regard to all relevant legislation including, but not limited to, the following legislation:

- Children Act 1989
- Children Act 2004
- Safeguarding Vulnerable Groups Act 2006
- The Education (School Teachers' Appraisal) (England) Regulations 2012 (as amended)
- Sexual Offences Act 2003
- The Female Genital Mutilation Act 2003(as inserted by the Serious Crime Act 2015)
- Apprenticeships. Children and Learning Act 2009
- The General Data Protection Regulation (GDPR)
- Data Protection Act 2018
- Equality Act 2010
- Counter Terrorism and Security Act 2015
- The Childcare (Disqualification) and Childcare (Early Years Provision Free of Charge) (Extended Entitlement) (Amendment) Regulations 2018
- Voyeurism (Offences) Act 2019

Statutory guidance

- HM Government (2013) 'Multi-agency practice guidelines: Handling cases of Forced Marriage'
- DfE (2018) 'Working Together to Safeguard Children'
- DfE (2015) 'The Prevent duty'
- DfE (2021) 'Keeping children safe in education 2022'
- DfE (2018) 'Disqualification under the Childcare Act 2006'

Non-statutory guidance

- DfE (2015) 'What to do if you're worried a child is being abused'
- DfE (2018) 'Information sharing'
- DfE (2017) 'Child sexual exploitation'
- DfE (2018) 'Sexual violence and sexual harassment between children in schools and colleges'
- DfE (2022) 'Recruit teachers from overseas'



Other relevant school policies include:

- Behavioural Policy
- Staff Code of Conduct
- Confidentiality Policy
- Whistleblowing Policy
- Anti-Bullying Policy
- Exclusion Policy
- Online Safety Policy

Roles and responsibilities

The governing body has a duty to:

- Ensure that the school complies with its duties under the above child protection and safeguarding legislation.
- Guarantee that the policies, procedures and training opportunities in the school are effective and comply with the law at all times.
- Guarantee that the school contributes to inter-agency working in line with the statutory guidance 'Working Together to Safeguard Children'.
- Confirm that the school's safeguarding arrangements take into account the procedures and practices of the LA as part of the inter-agency safeguarding procedures.
- Understand the local criteria for action and the local protocol for assessment, and ensure these are reflected in the school's policies and procedures.
- Comply with its obligations under section 14B of the Children Act 2004 to supply the local safeguarding arrangements with information to fulfil its functions.
- Ensure that all governors receive appropriate safeguarding and child protection training upon their induction and that this training is updated regularly.
- Ensure that staff members have due regard to relevant data protection principles that allow them to share (and withhold) personal information.
- Ensure that a member of the governing body is nominated to liaise with the LA and/or partner agencies on issues of child protection and in the event of allegations of abuse made against the headteacher or another governor.
- Be aware of their obligations under the Human Rights Act 1998, the Equality Act 2010 (including the Public Sector Equality Duty), Data Protection Act 2018, the UK GDPR and the local multi-agency safeguarding arrangements.
- Guarantee that there are effective child protection policies and procedures in place together with a Staff Code of Conduct.
- Ensure that there is a senior governing body level lead responsible for safeguarding arrangements.



- Appoint a member of staff from the SLT to the role of DSL as an explicit part of the role-holder's job description.
- Appoint one or more deputy DSL(s) to provide support to the DSL and ensure that they are trained to the same standard as the DSL and that the role is explicit in their job description(s).
- Ensure all relevant persons are aware of the school's local safeguarding arrangements, including the governing body itself, the SLT and DSL.
- Make sure that pupils are taught about safeguarding, including protection against dangers online (including when they are online at home), through teaching and learning opportunities, as part of providing a broad and balanced curriculum.
- Adhere to statutory responsibilities by conducting pre-employment checks on staff who work with children, taking proportionate decisions on whether to ask for any checks beyond what is required.
- Ensure that staff members are appropriately trained to support pupils to be themselves at school, e.g. if they are LGBTQ+.
- Ensure the school has clear systems and processes in place for identifying possible mental health problems in pupils, including clear routes to escalate concerns and clear referral and accountability systems.
- Guarantee that volunteers are appropriately supervised.
- Make sure that at least one person on any appointment panel has undertaken safer recruitment training. C. Harris has relevant training
- Ensure that all staff members receive safeguarding and child protection training updates, such as e-bulletins, emails and staff meetings, as required, but at least annually.
- Certify that there are procedures in place to handle allegations against members of staff or volunteers.
- Confirm that there are procedures in place to make a referral to the DBS and the Teaching Regulation Agency (TRA), where appropriate, if a person in regulated activity has been dismissed or removed due to safeguarding concerns or would have been had they not resigned.
- Guarantee that there are procedures in place to handle pupils' allegations against other pupils.
- Ensure that appropriate disciplinary procedures are in place, as well as policies pertaining to the behaviour of pupils and staff.
- Ensure that procedures are in place to eliminate unlawful discrimination, harassment and victimisation, including those in relation to child-on-child abuse.
- Make sure that pupils' wishes and feelings are taken into account when determining what action to take and what services to provide to protect individual pupils.



- Guarantee that there are systems in place for pupils to express their views and give feedback.
- Establish an early help procedure and ensure all staff understand the procedure and their role in it.
- Appoint a designated teacher to promote the educational achievement of LAC and ensure that this person has undergone appropriate training.
- Ensure that the designated teacher works with the virtual school head (VSH) to discuss how the pupil premium funding can best be used to support LAC.
- Introduce mechanisms to assist staff in understanding and discharging their roles and responsibilities.
- Make sure that staff members have the skills, knowledge and understanding necessary to keep LAC safe, particularly with regards to the pupil's legal status, contact details and care arrangements.
- Put in place appropriate safeguarding responses for pupils who go missing from school, particularly on repeat occasions, to help identify any risk of abuse and neglect, including sexual abuse or exploitation, and prevent the risk of their disappearance in future.
- Ensure that all members of the governing board have been subject to an enhanced DBS check.
- Create a culture where staff are confident to challenge senior leaders over any safeguarding concerns.

The **headteacher** has a duty to:

- Safeguard pupils' wellbeing and maintain public trust in the teaching profession.
- Ensure that the policies and procedures adopted by the governing board, particularly concerning referrals of cases of suspected abuse and neglect, are followed by staff members.
- Provide staff, upon induction, with the Child Protection and Safeguarding Policy, Staff Code of Conduct, part one of the 'Keeping children safe in education' (KCSIE) guidance, Behavioural Policy, online safety training, and the identity of the DSL and any deputies.

The DSL has a duty to:

- Understand and keep up-to-date with local safeguarding arrangements.
- Act as the main point of contact with the three safeguarding partners and the child death review partner.
- Make the necessary child protection referrals to appropriate agencies.
- Understand when they should consider calling the police, in line with the National Police Chiefs' Council (NPCC) [guidance](#).
- Liaise with the headteacher to inform them of safeguarding issues and ongoing enquiries.



- Liaise with the deputy DSL(s) to ensure effective safeguarding outcomes.
- Act as a source of support, advice and expertise to staff members on matters of safeguarding by liaising with relevant agencies.
- Understand the assessment process for providing early help and intervention.
- Support staff members in liaising with other agencies and setting up inter-agency assessments where early help is deemed appropriate.
- Keep cases of early help under constant review and refer them to the Children's Social Care Services (CSCS) if the situation does not appear to be improving.
- Have a working knowledge of how LAs conduct a child protection case conference and a child protection review conference and be able to attend and contribute to these effectively when required to do so.
- Ensure each member of staff has access to and understands the school's Child Protection and Safeguarding Policy and procedures – this will be discussed during the staff induction process.
- Be alert to the specific requirements of children in need, including those with SEND and young carers.
- Keep detailed, accurate and secure records of concerns and referrals.
- Secure access to resources and attend any relevant training courses.
- Encourage a culture of listening to children and taking account of their wishes and feelings.
- Work with the governing body to ensure the school's Child Protection and Safeguarding Policy is reviewed annually and the procedures are updated regularly.
- Ensure the school's Child Protection and Safeguarding Policy is available publicly, and parents are aware that the school may make referrals for suspected cases of abuse or neglect, as well as the role the school plays in these referrals.
- Ensure the best educational outcomes by identifying at-risk pupils to the school and its staff, so that the relevant personnel understand each pupil's educational and welfare needs.
- Support teaching staff to identify the challenges that at-risk pupils may face and the additional academic support and adjustments they can make to support these pupils.
- Link with local safeguarding arrangements to make sure that staff members are aware of the training opportunities available and the latest local policies on safeguarding.
- Ensure that a pupil's child protection file is copied when transferring to a new school.
- Be available at all times during school hours to discuss any safeguarding concerns. NB. The school will determine what "available" means, e.g. it may be appropriate to be accessible via electronic means, such as on the phone or using video conferencing software.
- Hold the details of the LA personal advisor and liaise with them as necessary.



- The designated teacher has a responsibility for promoting the educational achievement of LAC and previously LAC, and for children who have left care through adoption, special guardianship or child arrangement orders or who were adopted from state care outside England and Wales.

Other staff members have a responsibility to:

- Safeguard pupils' wellbeing and maintain public trust in the teaching profession as part of their professional duties.
- Be aware that a pupil may not feel ready or know how to tell someone that they are being abused, exploited or neglected, and/or may not recognise their experiences as harmful.
- Provide a safe environment in which pupils can learn.
- Act in accordance with school procedures with the aim of eliminating unlawful discrimination, harassment and victimisation, including those in relation to child-on-child abuse.
- Maintain an attitude of 'it could happen here' where safeguarding is concerned.
- Be aware of the signs of abuse and neglect.
- Be aware of the early help process and understand their role in it.
- Act as the lead professional in undertaking an early help assessment, where necessary.
- Be aware of, and understand, the process for making referrals to CSCS, as well as for making statutory assessments under the Children Act 1989 and their role in these assessments.
- Be confident of the processing conditions under relevant data protection legislation, including information which is sensitive and personal, and information that should be treated as special category data.
- Make a referral to CSCS and/or the police immediately, if at any point there is a risk of immediate serious harm to a child.
- Be aware of and understand the procedure to follow in the event that a child confides they are being abused or neglected.
- Support social workers in making decisions about individual children, in collaboration with the DSL.
- Maintain appropriate levels of confidentiality when dealing with individual cases, and always act in the best interest of the child.
- Follow the school's procedure for, and approach to, preventing radicalisation
- Challenge senior leaders over any safeguarding concerns, where necessary.

Multi-agency working

The school contributes to inter-agency working as part of its statutory duty.



The school is aware of and will follow the local safeguarding arrangements.

The school will work with CSCS, the police, health services and other services to protect the welfare of its pupils, through the early help process and by contributing to inter-agency plans to provide additional support.

Where a need for early help is identified, the school will allow access for CSCS from the host LA and, where appropriate, a placing LA, for that LA to conduct (or consider whether to conduct) a section 17 or 47 assessment.

The school recognises the importance of proactive information sharing between professionals and local agencies in order to effectively meet pupils' needs and identify any need for early help.

Considering 4.3, staff members are aware that whilst the GDPR and the Data Protection Act 2018 place a duty on schools to process personal information fairly and lawfully, they also allow for information to be stored and shared for safeguarding purposes – data protection regulations do not act as a barrier to sharing information where failure to do so would result in the pupil being placed at risk of harm.

Staff members will ensure that fear of sharing information does not stand in the way of their responsibility to promote the welfare and safety of pupils.

If staff members are in doubt about sharing information, they will speak to the DSL or deputy DSL.

The school also recognises the particular importance of inter-agency working in identifying and preventing child sexual exploitation (CSE).

Abuse and neglect

All members of staff will be aware that abuse, neglect and safeguarding issues are rarely standalone events that can be given a specific label and multiple issues often overlap one another.

All staff, especially the DSL and their deputies, will be aware that pupils can be at risk of abuse or exploitation in situations outside their families (extra-familial harms).

All staff members will be aware of the indicators of abuse and the appropriate action to take following a pupil being identified as at potential risk of abuse or neglect.

When identifying pupils at risk of potential harm, staff members will look out for a number of indicators including, but not limited to, the following:

- Injuries in unusual places, such as bite marks on the neck, that are also inconsistent with their age
- Lack of concentration and acting withdrawn



- Knowledge ahead of their age, e.g. sexual knowledge.
- Use of explicit language
- Fear of abandonment
- Depression and low self-esteem

All members of staff will be aware of the indicators of child-on-child abuse, such as those in relation to bullying, gender-based violence, sexual assaults and sexting.

All staff will be aware of the necessary procedures to follow to prevent child-on-child abuse, as outlined in Allegations of abuse against Children section of this policy.

All staff will be aware of the behaviours linked to drug taking, alcohol abuse, truancy and sexting, and will understand that these put pupils in danger.

Staff members will be aware of the effects of a pupil witnessing an incident of abuse, such as witnessing domestic violence at home.

Types of abuse and neglect

Abuse: A form of maltreatment of a child which involves inflicting harm or failing to act to prevent harm. Children may be abused in a family, institutional or community setting by those known to them or, more rarely, by others, e.g. via the internet.

Physical abuse: A form of abuse which may involve actions such as hitting, throwing, burning, drowning and poisoning, or otherwise causing physical harm to a child. Physical abuse can also be caused when a parent fabricates the symptoms of, or deliberately induces, illness in a child.

Emotional abuse: A form of abuse that involves the emotional maltreatment of a child to cause severe and adverse effects on the child's emotional development. This may involve telling a child they are worthless, unloved, inadequate, not giving them the opportunities to express their views, deliberately silencing them, or often making them feel as though they are in danger.

Sexual abuse: A form of abuse that involves forcing or enticing a child to take part in sexual activities, not necessarily involving a high level of violence, and whether or not the child is aware of what is happening. This may involve physical assault, such as penetrative assault and touching, or non-penetrative actions, such as looking at sexual images or encouraging children to behave in inappropriate ways.

Neglect: A form of abuse that involves the persistent failure to meet a child's basic physical and/or psychological needs, likely to result in serious impairment of a child's health or development. This may involve providing inadequate food, clothing or shelter, or the inability to protect a child from physical or emotional harm or ensure access to appropriate medical treatment.

Domestic abuse



For the purposes of this policy, and in line with the Domestic Abuse Act 2021, “**domestic abuse**” is defined as abusive behaviour of a person towards another person (including conduct directed at someone else, e.g. the person’s child) where both are aged 16 or over and are personally connected. “**Abusive behaviour**” includes physical or sexual abuse, violent or threatening behaviour, controlling or coercive behaviour, economic abuse, psychological or emotional abuse, or another form of abuse. “**Personally connected**” includes people who:

- Are, have been, or have agreed to be married to each other.
- Are, have been, or have agreed to be in a civil partnership with each other.
- Are, or have been, in an intimate personal relationship with each other.
- Each have, or had, a parental relationship towards the same child.
- Are relatives.

The school will recognise the impact of domestic abuse on children, as victims in their own right, if they see, hear or experience the effects of domestic abuse. All staff will be aware of the signs of domestic abuse and follow the appropriate safeguarding procedures where concerns arise.

FGM

For the purpose of this policy, FGM is defined as the partial or total removal of the external female genitalia, or any other injury to the female genital organs.

FGM is considered a form of abuse in the UK and is illegal.

All staff will be alert to the possibility of a girl being at risk of FGM, or already having suffered FGM. If staff members are worried about someone who is at risk of FGM or who has been a victim of FGM, they are required to share this information with social care and/or the police.

Teaching staff are **legally required** to report to the police any discovery, whether through disclosure by the victim or visual evidence, of FGM on a girl under the age of 18. Teachers failing to report such cases will face disciplinary action.

NB. The above does not apply to any suspected or at-risk cases, nor if the individual is over the age of 18. In such cases, local safeguarding procedures will be followed.

There are a range of potential indicators that a pupil may be at risk of FGM. While individually they may not indicate risk, if two or more indicators are present, this could signal a risk to the pupil.

Victims of FGM are most likely to come from communities that are known to adopt this practice. It is important to note that the pupil may not yet be aware of the practice or that it may be conducted on them, so staff will be sensitive when broaching the subject.

Indicators that may show a heightened risk of FGM include the following:



- The socio-economic position of the family and their level of integration into UK society
- Any girl with a mother or sister who has been subjected to FGM
- Any girl withdrawn from PSHE

Indicators that may show FGM could take place soon include the following:

- When a female family elder is visiting from a country of origin
- A girl may confide that she is to have a 'special procedure' or a ceremony to 'become a woman'
- A girl may request help from a teacher if she is aware or suspects that she is at immediate risk
- A girl, or her family member, may talk about a long holiday to her country of origin or another country where the practice is prevalent

Staff will be vigilant to the signs that FGM has already taken place so that help can be offered, enquiries can be made to protect others, and criminal investigations can begin.

Indicators that FGM may have already taken place include the following:

- Difficulty walking, sitting or standing
- Spending longer than normal in the bathroom or toilet
- Spending long periods of time away from a classroom during the day with bladder or menstrual problems
- Prolonged or repeated absences from school followed by withdrawal or depression
- Reluctance to undergo normal medical examinations
- Asking for help, but not being explicit about the problem due to embarrassment or fear

Teachers will not examine pupils, and so it is rare that they will see any visual evidence, but they will report to the police where an act of FGM appears to have been carried out. Unless the teacher has a good reason not to, they should also consider and discuss any such case with the DSL and involve CSCS as appropriate.

FGM is also included in the definition of 'honour-based' abuse (HBA), which involves crimes that have been committed to defend the honour of the family and/or community, alongside forced marriage and breast ironing.

All forms of HBA are forms of abuse and will be treated and escalated as such.

Staff will be alert to the signs of HBA, including concerns that a child is at risk of HBA, or has already suffered from HBA, and will consult with the DSL who will activate local safeguarding procedures if concerns arise.

Forced marriage

For the purpose of this policy, a **"forced marriage"** is defined as a marriage that is entered into without the full and free consent of one or both parties, and where violence, threats or any



other form of coercion is used to cause a person to enter into the marriage. Forced marriage is classed as a crime in the UK.

As part of HBA, staff will be alert to the signs of forced marriage including, but not limited to, the following:

- Becoming anxious, depressed and emotionally withdrawn with low self-esteem
- Showing signs of mental health disorders and behaviours such as self-harm or anorexia
- Displaying a sudden decline in their educational performance, aspirations or motivation
- Regularly being absent from school
- Displaying a decline in punctuality
- An obvious family history of older siblings leaving education early and marrying early

If staff members have any concerns regarding a child who may have undergone, is currently undergoing, or is at risk of, forced marriage, they will speak to the DSL and local safeguarding procedures will be followed – this could include referral to CSCS, the police or the Forced Marriage Unit.

Child sexual exploitation (CSE)

For the purpose of this policy, **“child sexual exploitation”** is defined as: a form of sexual abuse where an individual or group takes advantage of an imbalance of power to coerce, manipulate or deceive a child or young person into sexual activity, for either, or both, of the following reasons:

- In exchange for something the victim needs or wants
- For the financial advantage or increased status of the perpetrator or facilitator
- CSE does not always involve physical contact, as it can also occur online. It is also important to note that a child can be sexually exploited even if the sexual activity appears consensual.

The school has adopted the following procedure for handling cases of CSE, as outlined by the DfE:

Identifying cases

School staff members will be aware of and look for the key indicators of CSE; these are as follows:

- Having older boyfriends or girlfriends
- Suffering from sexually transmitted infections or becoming pregnant

Other indicators outlined previously in this policy may also be signs that a child is a victim of CSE

Referring cases



Where CSE, or the risk of it, is suspected, staff will discuss the case with the DSL. If after discussion a concern still remains, local safeguarding procedures will be triggered, including referral to the LA.

Support

The LA and all other necessary authorities will then handle the matter to conclusion. The school will cooperate as needed.

Child criminal exploitation (CCE)

For the purpose of this policy, **“child criminal exploitation”** is defined as: where an individual or group takes advantage of an imbalance of power to coerce, control, manipulate or deceive a child into criminal activity, for any, or all, of the following reasons:

- In exchange for something the victim needs or wants
- For the financial advantage or other advantage of the perpetrator or facilitator
- Through violence or the threat of violence

CCE may be in effect even if the criminal activity appears consensual and can happen through the use of technology.

Identifying cases

School staff will be aware of the following indicators that a child is the victim of CCE:

- Appearing with unexplained gifts or new possessions
- Associating with other young people involved in exploitation
- Suffering from changes in emotional wellbeing
- Misusing drugs or alcohol
- Going missing for periods of time or regularly coming home late
- Regularly missing school or education or not taking part

Mental health

All staff will be made aware that mental health problems can, in some cases, be an indicator that a pupil has suffered, or is at risk of suffering abuse, neglect or exploitation.

Staff will not attempt to make a diagnosis of mental health problems – the school will ensure this is done by a trained mental health professional.

Staff will be encouraged to identify pupils whose behaviour suggests they may be experiencing a mental health problem or may be at risk of developing one.

Staff who have a mental health concern about a pupil that is also a safeguarding concern will act in line with this policy and speak to the DSL or a deputy.



The school will access a range of advice to help them identify pupils in need of additional mental health support, including working with external agencies.

Homelessness

The DSL and deputy(s) will be aware of the contact details and referral routes into the Local Housing Authority so that concerns over homelessness can be raised as early as possible.

Indicators that a family may be at risk of homelessness include the following:

- Household debt
- Rent arrears
- Domestic abuse
- Anti-social behaviour
- Any mention of a family moving home because “they have to”

Referrals to the Local Housing Authority do not replace referrals to CSCS where a child is being harmed or at risk of harm.

For 16- and 17-year-olds, homelessness may not be family-based and referrals to CSCS will be made as necessary where concerns are raised.

County lines

For the purpose of this policy, “**County lines**” refers to organised criminal networks or gangs exploiting children to move drugs and money into one or more areas (within the UK). Drugs and money may also be stored by children for the purpose of criminal activity.

Staff will be made aware of pupils with missing episodes who may have been trafficked for the purpose of transporting drugs.

Staff members who suspect a pupil may be vulnerable to, or involved in, county lines activity will immediately report all concerns to the DSL.

The DSL will consider referral to the National Referral Mechanism on a case-by-case basis and consider involving local services and providers who offer support to victims of county lines exploitation.

Indicators that a pupil may be involved in county lines active include the following:

- Persistently going missing or being found out of their usual area
- Unexplained acquisition of money, clothes or mobile phones
- Excessive receipt of texts or phone calls
- Relationships with controlling or older individuals or groups
- Leaving home without explanation
- Evidence of physical injury or assault that cannot be explained



- Carrying weapons
- Sudden decline in school results
- Becoming isolated from peers or social networks
- Self-harm or significant changes in mental state
- Parental reports of concern

Serious violence

Through training, all staff will be made aware of the indicators which may signal a pupil is at risk from, or is involved with, serious violent crime. These indicators include, but are not limited to, the following:

- Increased absence from school
- A change in friendships
- New relationships with older individuals or groups
- A significant decline in academic performance
- Signs of self-harm
- A significant change in wellbeing
- Signs of assault
- Unexplained injuries
- Unexplained gifts or new possessions

Staff will be made aware of some of the most significant risk factors that could increase a pupil's vulnerability to becoming involved in serious violent crime. These risk factors include, but are not limited to, the following:

- A history of committing offences
- Substance abuse
- Anti-social behaviour
- Truancy
- Peers involved in crime and/or anti-social behaviour

Staff members who suspect a pupil may be vulnerable to, or involved in, serious violent crime will immediately report their concerns to the DSL.

Pupils with family members in prison

Pupils with a family member in prison will be offered pastoral support as necessary.

They will receive a copy of '[Are you a young person with a family member in prison](#)' from Action for Prisoners' Families where appropriate and allowed the opportunity to discuss questions and concerns.



Pupils required to give evidence in court

Pupils required to give evidence in criminal courts, either for crimes committed against them or crimes they have witnessed, will be offered appropriate pastoral support.

Pupils will also be provided with the booklet '[Going to Court](#)' from HM Courts and Tribunals Service (HMCTS) where appropriate and allowed the opportunity to discuss questions and concerns. .

Contextual safeguarding

Safeguarding incidents can occur outside of school and can be associated with outside factors. School staff, particularly the DSL and their deputy(s), will always consider the context of incidents – this is known as contextual safeguarding.

Assessment of pupils' behaviour will consider whether there are wider environmental factors that are a threat to their safety and/or welfare.

The school will provide as much contextual information as possible when making referrals to CSCS.

Preventing radicalisation

For the purpose of this policy, we have used the following definitions:

“Radicalisation” refers to the process by which a person comes to support terrorism and extremist ideologies

“Extremism” refers to the vocal or active opposition to fundamental British values, e.g. individual liberty and the rule of law

“Terrorism” refers to an action that endangers or causes serious violence to a person or people, property, or electronic system, which is designed to influence the government, intimidate the public, or advance a cause.

Protecting children from the risk of radicalisation is part of the school's wider safeguarding duties.

The school will actively assess the risk of pupils being drawn into terrorism.

Staff will be alert to changes in pupils' behaviour which could indicate that they may be in need of help or protection.

Staff will use their professional judgement to identify pupils who may be at risk of radicalisation and act appropriately, which may include making a referral to the Channel programme. The school will work with local safeguarding arrangements as appropriate.



The school will ensure that they engage with parents and families, as they are in a key position to spot signs of radicalisation. In doing so, the school will assist and advise family members who raise concerns and provide information for support mechanisms.

Any concerns over radicalisation will be discussed with a child's parents, unless the school has reason to believe that the child would be placed at risk as a result.

Training

The DSL will undertake Prevent awareness training to be able to provide advice and support to other staff on how to protect children against the risk of radicalisation. The DSL will hold formal training sessions with all members of staff to ensure they are aware of the risk indicators and their duties regarding preventing radicalisation.

Risk indicators of vulnerable pupils

Indicators of an identity crisis include the following:

- Distancing themselves from their cultural/religious heritage
- Uncomfortable with their place in society
- Indicators of a personal crisis include the following:
 - Family tensions
 - A sense of isolation
 - Low self-esteem
 - Disassociation from existing friendship groups
 - Searching for answers to questions about identity, faith and belonging

Indicators of vulnerability through personal circumstances includes the following:

- Migration
- Local community tensions
- Events affecting their country or region of origin
- Alienation from UK values
- A sense of grievance triggered by personal experience of racism or discrimination

Indicators of vulnerability through unmet aspirations include the following:

- Perceptions of injustice
- Feelings of failure
- Rejection of civic life

Indicators of vulnerability through criminality:

- Experiences of dealing with the police
- Involvement with criminal groups



Making a judgement

When making a judgement, staff will ask themselves the following questions:

- Does the pupil have access to extremist influences?
- Does the pupil access the internet for the purposes of extremist activities (e.g. using closed network groups, accessing or distributing extremist material, contacting such groups covertly using Skype)?
- Is there a reason to believe that the pupil has been, or is likely to be, involved with extremist organisations?
- Is the pupil known to have possessed, or be actively seeking, extremist literature/other media likely to incite racial or religious hatred?
- Does the pupil sympathise with or support illegal/illicit groups?
- Does the pupil support groups with links to extremist activity?
- Has the pupil encountered peer, social, family or faith group rejection?
- Is there evidence of extremist ideological, political or religious influence on the pupil?
- Have international events in areas of conflict and civil unrest had a noticeable impact on the pupil?
- Has there been a significant shift in the pupil's outward appearance that suggests a new social, political or religious influence?
- Has the pupil come into conflict with family over religious beliefs, lifestyle or dress choices?
- Does the pupil vocally support terrorist attacks, either verbally or in their written work?
- Has the pupil witnessed or been the victim of racial or religious hate crimes?
- Is there a pattern of regular or extended travel within the UK?
- Has the pupil travelled for extended periods of time to international locations?
- Has the pupil employed any methods to disguise their identity?
- Does the pupil have experience of poverty, disadvantage, discrimination or social exclusion?
- Does the pupil display a lack of affinity or understanding for others?
- Is the pupil the victim of social isolation?
- Does the pupil demonstrate a simplistic or flawed understanding of religion or politics?
- Is the pupil a foreign national or refugee, or awaiting a decision on their/their family's immigration status?
- Does the pupil have insecure, conflicted or absent family relationships?
- Has the pupil experienced any trauma in their lives, particularly trauma associated with war or sectarian conflict?
- Is there evidence that a significant adult or other person in the pupil's life has extremist views or sympathies?



Critical indicators include where the pupil is:

- In contact with extremist recruiters.
- Articulating support for extremist causes or leaders.
- Accessing extremist websites.
- Possessing extremist literature.
- Using extremist narratives and a global ideology to explain personal disadvantage.
- Justifying the use of violence to solve societal issues.
- Joining extremist organisations.
- Making significant changes to their appearance and/or behaviour.

Any member of staff who identifies such concerns, because of observed behaviour or reports of conversations, will report these to the DSL.

The DSL will consider whether a situation may be so serious that an emergency response is required. In this situation, a 999 call will be made; however, concerns are most likely to require a police investigation as part of the Channel programme, in the first instance.

Channel programme

Safeguarding children is a key role for both the school and the LA, which is implemented through the use of the Channel programme. This service shall be used where a vulnerable pupil is at risk of being involved in terrorist activities.

In cases where the school believes a pupil is potentially at serious risk of being radicalised, the headteacher or DSL will contact the Channel programme.

The DSL will also support any staff making referrals to the Channel programme.

The Channel programme ensures that vulnerable children and adults of any faith, ethnicity or background, receive support before their vulnerabilities are exploited by those that would want them to embrace terrorism, and before they become involved in criminal terrorist-related activity.

The programme identifies individuals at risk, assesses the extent of that risk, and develops the most appropriate support plan for the individuals concerned, with multi-agency cooperation and support from the school.

The delivery of the Channel programme may often overlap with the implementation of the LA's or school's wider safeguarding duty, especially where vulnerabilities have been identified that require intervention from CSCS, or where the individual is already known to CSCS.

The school will keep in mind that an individual's engagement with the Channel programme is voluntary at all stages.

Extremist speakers



The Guest Speaker Policy will prevent speakers who may promote extremist views from using the school premises.

Building children's resilience

The school will:

- Provide a safe environment for debating controversial issues.
- Promote fundamental British values, alongside pupils' spiritual, moral, social and cultural development.
- Allow pupils time to explore sensitive and controversial issues.
- Provide pupils with the knowledge and skills to understand and manage potentially difficult situations, recognise risk, make safe choices and recognise where pressure from others threatens their personal safety and wellbeing.
- Equip pupils to explore political and social issues critically, weigh evidence, debate, and make reasoned arguments.
- Teach pupils about how democracy, government and law making/enforcement occur.
- Teach pupils about mutual respect and understanding for the diverse national, regional, religious and ethnic identities of the UK.

Resources

The school will utilise the following resources when preventing radicalisation:

- Local safeguarding arrangements
- Local police (contacted via 101 for non-emergencies)
- The DfE's dedicated helpline (020 7340 7264)
- The Channel awareness programme
- The [Educate Against Hate](#) website

A child missing from education

A child going missing from school is a potential indicator of abuse or neglect and, as such, these children are increasingly at risk of being victims of harm, exploitation or radicalisation.

Staff will monitor pupils that go missing from the school, particularly on repeat occasions, and report them to the DSL following normal safeguarding procedures, in accordance with the school policy.

The school will inform the LA of any pupil who fails to attend regularly or has been absent without the school's permission for a continuous period of 10 school days or more.



Admissions register

Pupils are placed on the admissions register at the beginning of the first day that is agreed by the school, or when the school has been notified that the pupil will first be attending.

The school will notify the LA within five days of when a pupil's name is added to the admissions register.

The school will ensure that the admissions register is kept up-to-date and accurate at all times and will inform parents when any changes occur.

Two emergency contact details will be held for each pupil where possible.

Staff will monitor pupils who do not attend the school on the agreed date and will notify the LA at the earliest opportunity.

If a parent notifies the school that their child will live at a different address, the school will record the following information on the admissions register:

- The full name of the parent with whom the pupil will live
- The new address
- The date from when the pupil will live at that address

If a parent notifies the school that their child will be attending a different school, or is already registered at a different school, the following information will be recorded on the admissions register:

- The name of the new school
- The date on which the pupil first attended, or is due to attend, that school

Where a pupil moves to a new school, the school will use Anycomms + secure internet system to securely transfer pupils' data.

To ensure accurate data is collected to allow effective safeguarding, the school will inform the LA of any pupil who is going to be deleted from the admission register, in accordance with the Education (Pupil Registration) (England) Regulations 2006 (as amended), where they:

- Have been taken out of the school by their parents, and are being educated outside the national education system, e.g. home education.
- Have ceased to attend the school, and no longer live within a reasonable distance of the premises.
- Have been certified by the school's medical officer as unlikely to be in a fit state of health to attend, before ceasing to be of compulsory school age, and their parent has not indicated the intention to the pupil continuing to attend school after ceasing to be of compulsory school age.



- Have been in custody for a period of more than four months due to a final court order and the school does not reasonably believe they will be returning to the school at the end of that period.
- Have been permanently excluded.
- The school will also remove a pupil from the admissions register where the school and LA has been unable to establish the pupil's whereabouts after making reasonable enquiries into their attendance.

If a pupil is to be removed from the admissions register, the school will provide the LA with the following information:

- The full name of the pupil
- The full name and address of any parent with whom the pupil lives
- At least one telephone number of the parent with whom the pupil lives
- The full name and address of the parent with whom the pupil is going to live, and the date that the pupil will start living there, if applicable
- The name of the pupil's new school and the pupil's expected start date there, if applicable
- The grounds for removal from the admissions register under regulation 8 of the Education (Pupil Registration) (England) Regulations 2006 (as amended)
- The school will work with the LA to establish methods of making returns for pupils back into the school.
- The school will highlight to the LA where they have been unable to obtain necessary information from parents, e.g. where an address is unknown.
- The school will also highlight any other necessary contextual information including safeguarding concerns

Pupils with SEND

The school recognises that pupils with SEND can face additional safeguarding challenges and understands that further barriers may exist when determining abuse and neglect in this group of pupils.

Staff will be aware of the following:

- Certain indicators of abuse, such as behaviour, mood and injury, may relate to the pupil's disability without further exploration; however, it should never be assumed that a child's indicators relate only to their disability
- Pupils with SEND can be disproportionately impacted by things like bullying, without outwardly showing any signs
- Communication barriers may exist, as well as difficulties in overcoming these barriers



When reporting concerns or making referrals for pupils with SEND, the above factors will always be taken into consideration.

When managing a safeguarding issue relating to a pupil with SEND, the DSL will liaise with the school's SENCO, Leonie Griffith, as well as the pupil's family where appropriate, to ensure that the pupil's needs are effectively met.

Alternative provision

The school will remain responsible for a pupil's welfare during their time at an alternative provider.

When placing a pupil with an alternative provider, the school will obtain written confirmation that the provider has conducted all relevant safeguarding checks on staff.

Work experience

Where the school has pupils conduct work experience at the school, an enhanced DBS check will be obtained if the pupil is over the age of 16.

Homestay exchange visits

School-arranged homestays in UK

Where the school is arranging for a visiting child to be provided with care and accommodation in the UK in the home of a family to which the child is not related, the responsible adults are considered to be in regulated activity for the period of the stay.

In such cases, the school is the regulated activity provider; therefore, the school will obtain all the necessary information required, including a DBS enhanced certificate with barred list information, to inform its assessment of the suitability of the responsible adults.

Where criminal record information is disclosed, the school will consider, alongside all other information, whether the adult is a suitable host.

In addition to the responsible adults, the school will consider whether a DBS enhanced certificate should be obtained for anyone else aged over 16 in the household.

School-arranged homestays abroad

The school will liaise with partner schools to discuss and agree the arrangements in place for the visit.

The school will consider, on a case-by-case basis, whether to contact the relevant foreign embassy or High Commission of the country in question to ascertain what checks may be possible in respect of those providing homestay outside of the UK.



The school will use its professional judgement to assess whether the arrangements are appropriate and sufficient to safeguard every child involved in the exchange.

Pupils will be provided with emergency contact details to use where an emergency occurs or a situation arises that makes them feel uncomfortable.

Private fostering

Where the school becomes aware of a pupil being privately fostered, they will notify the LA as soon as possible to allow the LA to conduct any necessary checks.

Concerns about a pupil

If a member of staff has any concern about a child's welfare, they will act on them immediately by speaking to the DSL or a deputy.

All staff members are aware of the procedure for reporting concerns and understand their responsibilities in relation to confidentiality and information sharing, as outlined in the specific safeguarding concerns section of this policy.

Where the DSL is not available to discuss the concern with, staff members will contact the deputy DSL with the matter.

If a referral is made about a child by anyone other than the DSL, the DSL will be informed as soon as possible.

The LA will make a decision regarding what action is required within one working day of the referral being made and will notify the referrer.

Staff are required to monitor a referral if they do not receive information from the LA regarding what action is necessary for the pupil.

If the situation does not improve after a referral, the DSL will ask for reconsideration to ensure that their concerns have been addressed and that the situation improves for the pupil.

If early help is appropriate, the case will be kept under constant review. If the pupil's situation does not improve, a referral will be considered.

All concerns, discussions and decisions made, as well as the reasons for making those decisions, will be recorded in writing by the DSL and kept securely in a locked cabinet in the Head teacher's office.

If a pupil is in immediate danger, a referral will be made to CSCS and/or the police immediately.

If a pupil has committed a crime, such as sexual violence, the police will be notified without delay.



Where there are safeguarding concerns, the school will ensure that the pupil's wishes are always taken into account, and that there are systems available for pupils to provide feedback and express their views.

When responding to safeguarding concerns, staff members will act calmly and supportively, ensuring that the pupil feels like they are being listened to and believed.

An inter-agency assessment will be undertaken where a child and their family could benefit from coordinated support from more than one agency. These assessments will identify what help the child and family require in preventing needs escalating to a point where intervention would be needed.

Early help

Early help means providing support as soon as a problem emerges, at any point in a child's life.

Any pupil may benefit from early help, but in particular staff will be alert to the potential need for early help for pupils who:

- Have SEND (whether or not they have a statutory EHC plan).
- Are young carers.
- Show signs of being drawn into anti-social or criminal behaviour, including gang involvement and association with organised crime groups.
- Are frequently missing/going missing from care or from home.
- Misuse drugs or alcohol.
- Are at risk of modern slavery, trafficking or exploitation.
- Are in a family circumstance presenting challenges such as substance abuse, adult mental health problems or domestic abuse.
- Are returned home to their family from care.
- Show early signs of abuse and/or neglect.
- Are at risk of being radicalised or exploited.
- Are privately fostered.

Early help will also be used to address non-violent harmful sexual behaviour to prevent escalation.

All staff will be made aware of the local early help process and understand their role in it.

The DSL will take the lead where early help is appropriate.

Managing referrals

The reporting and referral process outlined in [Appendix B](#) will be followed accordingly.

All staff members, in particular the DSL, will be aware of the LA's arrangements in place for managing referrals. The DSL will provide staff members with clarity and support where needed.



When making a referral to CSCS or other external agencies, information will be shared in line with confidentiality requirements and will only be shared where necessary to do so.

The DSL will work alongside external agencies, maintaining continuous liaison, including multi-agency liaison where appropriate, in order to ensure the wellbeing of the pupils involved.

The DSL will work closely with the police to ensure the school does not jeopardise any criminal proceedings, and to obtain help and support as necessary.

Where a pupil has been harmed or is in immediate danger or at risk of harm, the referrer will be notified of the action that will be taken within one working day of a referral being made.

Where this information is not forthcoming, the referrer will contact the assigned social worker for more information.

The school will not wait for the start or outcome of an investigation before protecting the victim and other pupils: this applies to criminal investigations as well as those made by CSCS.

Where CSCS decide that a statutory investigation is not appropriate, the school will consider referring the incident again if it is believed that the pupil is at risk of harm.

Where CSCS decide that a statutory investigation is not appropriate and the school agrees with this decision, the school will consider the use of other support mechanisms, such as early help and pastoral support.

At all stages of the reporting and referral process, the pupil will be informed of the decisions made, actions taken and reasons for doing so.

Discussions of concerns with parents will only take place where this would not put the pupil or others at potential risk of harm.

The school will work closely with parents to ensure that the pupil, as well as their family, understands that the arrangements in place, such as in-school interventions, are effectively supported and know where they can access additional support.

Concerns about staff members and safeguarding practices

If a staff member has concerns about another member of staff (including supply staff and volunteers), it will be raised with the headteacher.

If the concern is with regards to the headteacher, it will be referred to the chair of governors.

Any concerns regarding the safeguarding practices at the school will be raised with the SLT, and the necessary whistleblowing procedures will be followed, as outlined in the Whistleblowing Policy.

If a staff member feels unable to raise an issue with the SLT, they should access other whistleblowing channels such as the NSPCC whistleblowing helpline (0800 028 0285).



Any allegations of abuse made against staff members, including those that meet the harms test, will be dealt with in accordance with the school's Allegations of Abuse Against Staff Policy.

For the purpose of this policy, the “**harms test**” refers to a situation where a person would pose a risk of harm if they continued to work in regular or close contact with pupils in their present position, or in any capacity.

Dealing with allegations of abuse against staff

All allegations against staff, supply staff and volunteers, will be dealt with in line with the school's Allegations of Abuse Against Staff Policy – a copy of which will be provided to, and understood by, all staff.

The school will ensure all allegations against staff, including those who are not employees of the school, are dealt with appropriately and that the school liaises with the relevant parties.

When using an agency to access supply staff, the school will inform them of its processes for managing allegations, including any updates to the relevant policies, and liaise with the agency's human resources manager/provider where necessary.

When an allegation is made, an investigation will be carried out to gather enough evidence to establish whether it has a foundation, and the school will ensure there is sufficient information to meet the [DBS referral criteria](#).

On conclusion of a case, where an individual is removed from regulated activity – this could be due to suspension, redeployment to work that is not in regulated activity, dismissal or resignation – the school will refer the case to the DBS as soon as possible.

If a case manager is concerned about the welfare of other children in the community following a staff member's suspension, they may report this concern to CSCS.

The school will preserve records which contain information about allegations of sexual abuse for the Independent Inquiry into Child Sexual Abuse (IICSA), for the term of the inquiry in question.

Allegations of abuse against other pupils (child-on-child abuse)

Sexual harassment

Sexual harassment refers to unwanted conduct of a sexual nature that occurs online or offline. Sexual harassment violates a pupil's dignity and makes them feel intimidated, degraded or humiliated, and can create a hostile, sexualised or offensive environment. If left unchallenged, sexual harassment can create an atmosphere that normalises inappropriate behaviour and may lead to sexual violence.

Sexual harassment includes:

- Sexual comments.



- Sexual “jokes” and taunting.
- Physical behaviour, such as deliberately brushing against another pupil.
- Online sexual harassment, including non-consensual sharing of images and videos and consensual sharing of sexual images and videos (often known as sexting), inappropriate comments on social media, exploitation, coercion and threats – online sexual harassment may be isolated or part of a wider pattern.

Sexual violence

Sexual violence refers to the three following offences:

Rape: A person (A) commits an offence of rape if he intentionally penetrates the vagina, anus or mouth of another person (B) with his penis, B does not consent to the penetration and A does not reasonably believe that B consents.

Assault by Penetration: A person (A) commits an offence if s/he intentionally penetrates the vagina or anus of another person (B) with a part of her/his body or anything else, the penetration is sexual, B does not consent to the penetration and A does not reasonably believe that B consents.

Sexual Assault: A person (A) commits an offence of sexual assault if s/he intentionally touches another person (B), the touching is sexual, B does not consent to the touching and A does not reasonably believe that B consents.

Harmful sexual behaviours

The term “**harmful sexual behaviour**” is used to describe behaviour that is problematic, abusive and violent, and that may cause developmental damage. Harmful sexual behaviour may include:

- Using sexually explicit words and phrases.
- Inappropriate touching.
- Sexual violence or threats.
- Full penetrative sex with other children or adults.
- Sexual interest in adults or children of very different ages to their own.
- Forceful or aggressive sexual behaviour.
- Compulsive habits.
- Sexual behaviour affecting progress and achievement.
- Using sexually explicit words and phrases.
- Inappropriate touching.
- Sexual violence or threats.

Sexual behaviour can also be harmful if one of the children is much older (especially where there is two years or more difference, or where one child is pre-pubescent and the other is not) and where the child may have SEND.



A preventative approach

In order to prevent child-on-child abuse and address the wider societal factors that can influence behaviour, the school will educate pupils about abuse, its forms and the importance of discussing any concerns and respecting others through the curriculum, assemblies and PSHE lessons.

The school will also ensure that pupils are taught about safeguarding, including online safety, as part of a broad and balanced curriculum in PSHE lessons, RSE and group sessions. Such content will be age and stage of development specific, and tackle issues such as the following:

- Healthy relationships
- Respectful behaviour
- Gender roles, stereotyping and equality
- Body confidence and self-esteem
- Prejudiced behaviour
- That sexual violence and sexual harassment is always wrong
- Addressing cultures of sexual harassment

Pupils will be allowed an open forum to talk about concerns and sexual behaviour. They are taught how to raise concerns and make a report, including concerns about their friends or peers, and how a report will be handled

Awareness

All staff will be aware that pupils of any age and sex are capable of abusing their peers and will never tolerate abuse as “banter” or “part of growing up”.

All staff will be aware that child-on-child abuse can be manifested in many different ways, including sexting and gender issues, such as girls being sexually touched or assaulted, and boys being subjected to hazing/initiation type of violence which aims to cause physical, emotional or psychological harm.

All staff will be made aware of the heightened vulnerability of pupils with SEND, who are three times more likely to be abused than their peers. Staff will not assume that possible indicators of abuse relate to the pupil’s SEND and will always explore indicators further.

LGBTQ+ children can be targeted by their peers. In some cases, children who are perceived to be LGBTQ+, whether they are or not, can be just as vulnerable to abuse as LGBTQ+ children.

The school’s response to boy-on-boy and girl-on-girl sexual violence and sexual harassment will be equally as robust as it is for incidents between children of the opposite sex.

Pupils will be made aware of how to raise concerns or make a report and how any reports will be handled. This includes the process for reporting concerns about friends or peers.



Support available if a child has been harmed, is in immediate danger or at risk of harm

If a child has been harmed, is in immediate danger or is at risk of harm, a referral will be made to CSCS.

Within one working day, a social worker will respond to the referrer to explain the action that will be taken.

Support available if early help, section 17 and/or section 47 statutory assessments are appropriate

If early help, section 17 and/or section 47 statutory assessments (assessments under the Children Act 1989) are appropriate, school staff may be required to support external agencies. The DSL and deputies will support staff as required.

Support available if a crime may have been committed

Rape, assault by penetration and sexual assaults are crimes. Where a report includes such an act, the police will be notified, often as a natural progression of making a referral to CSCS. The DSL will be aware of the local process for referrals to both CSCS and the police.

Whilst the age of criminal responsibility is 10 years of age, if the alleged perpetrator is under 10, the principle of referring to the police remains. In these cases, the police will take a welfare approach rather than a criminal justice approach.

The school has a close relationship with the local police force and the DSL will liaise closely with the local police presence.

Support available if reports include online behaviour

Online concerns can be especially complicated. The school recognises that there is potential for an online incident to extend further than the local community and for a victim, or the alleged perpetrator, to become marginalised and excluded both online and offline. There is also strong potential for repeat victimisation if the content continues to exist.

If the incident involves sexual images or videos held online, the [Internet Watch Foundation](#) will be consulted to have the material removed.

Staff will not view or forward illegal images of a child. If they are made aware of such an image, they will contact the DSL.

Managing disclosures



Victims will always be taken seriously, reassured, supported and kept safe. Victims will never be made to feel like they are causing a problem or made to feel ashamed.

If a friend of a victim makes a report or a member of staff overhears a conversation, staff will take action – they will never assume that someone else will deal with it. The basic principles remain the same as when a victim reports an incident; however, staff will consider why the victim has not chosen to make a report themselves and the discussion will be handled sensitively and with the help of CSCS where necessary. If staff are in any doubt, they will speak to the DSL.

Where an alleged incident took place away from the school or online but involved pupils from the school, the school's duty to safeguard pupils remains the same.

All staff will be trained to handle disclosures. Effective safeguarding practice includes:

- Never promising confidentiality at the initial stage.
- Only sharing the report with those necessary for its progression.
- Explaining to the victim what the next steps will be and who the report will be passed to.
- Recognising that the person the child chose to disclose the information to is in a position of trust.
- Being clear about boundaries and how the report will be progressed.
- Not asking leading questions and only prompting the child with open questions.
- Waiting until the end of the disclosure to immediately write a thorough summary. If notes must be taken during the disclosure, it is important to still remain engaged and not appear distracted.
- Only recording the facts as the child presents them – not the opinions of the note taker.
- Where the report includes an online element, being aware of searching, screening and confiscation advice and [UKCCIS sexting advice](#).
- Wherever possible, managing disclosures with two staff members present (preferably with the DSL or a deputy as one of the staff members).
- Informing the DSL or deputy as soon as possible after the disclosure if they could not be involved in the disclosure.
- The DSL will be informed of any allegations of abuse against pupils with SEND. They will record the incident in writing and, working with the SENCO, decide what course of action is necessary, with the best interests of the pupil in mind at all times.

Confidentiality

The school will only engage staff and agencies required to support the victim and/or be involved in any investigation. If a victim asks the school not to tell anyone about the disclosure,



the school cannot make this promise. Even without the victim's consent, the information may still be lawfully shared if it is in the public interest and protects children from harm.

The DSL will consider the following when making confidentiality decisions:

- Parents will be informed unless it will place the victim at greater risk.
- If a child is at risk of harm, is in immediate danger or has been harmed, a referral will be made to CSCS.
- Rape, assault by penetration and sexual assaults are crimes – reports containing any such crimes will be passed to the police.
- The DSL will weigh the victim's wishes against their duty to protect the victim and others. If a referral is made against the victim's wishes, it will be done so extremely carefully and the reasons for referral will be explained to the victim. Appropriate specialist support will always be offered.

Anonymity

There are legal requirements for anonymity where a case is progressing through the criminal justice system. The school will do all it can to protect the anonymity of children involved in any report of sexual violence or sexual harassment. It will carefully consider, based on the nature of the report, which staff will be informed and what support will be in place for the children involved.

When deciding on the steps to take, the school will consider the role of social media in potentially exposing victims' identities and facilitating the spread of rumours.

Risk assessment

The DSL or a deputy will make an immediate risk and needs assessment any time there is a report of sexual violence. For reports of sexual harassment, a risk assessment will be considered on a case-by-case basis. Risk assessments are not intended to replace the detailed assessments of experts, and for incidents of sexual violence it is likely that a professional risk assessment by a social worker or sexual violence specialist will be required.

Risk assessments will consider:

- The victim.
- The alleged perpetrator.
- Other children at the school, especially any actions that are appropriate to protect them.

Risk assessments will be recorded (either on paper or electronically) and kept under review in accordance with the school's Data Protection Policy.

Taking action following a disclosure



The DSL or a deputy will decide the school's initial response, taking into consideration:

- The victim's wishes.
- The nature of the incident.
- The ages and developmental stages of the children involved.
- Any power imbalance between the children.
- Whether the incident is a one-off or part of a pattern.
- Any ongoing risks.
- Any related issues and the wider context, such as whether there are wider environmental factors in a child's life that threaten their safety and/or welfare.
- The best interests of the child.
- That sexual violence and sexual harassment are always unacceptable and will not be tolerated.
- Immediate consideration will be given as to how to support the victim, alleged perpetrator and any other children involved.
- For reports of rape and assault by penetration, whilst the school establishes the facts, the alleged perpetrator will be removed from any classes shared with the victim. The school will consider how to keep the victim and alleged perpetrator apart on school premises, and on transport where applicable. These actions will not be seen as a judgement of guilt on the alleged perpetrator.
- For reports of sexual violence and sexual harassment, the proximity of the victim and alleged perpetrator and the suitability of shared classes, premises and transport will be considered immediately.
- In all cases, the initial report will be carefully evaluated and the wishes of the victim, nature of the allegations and requirement to protect all children will be taken into consideration.

Managing the report

The decision of when to inform the alleged perpetrator of a report will be made on a case-by-case basis. If a report is being referred to CSCS or the police, the school will speak to the relevant agency to discuss informing the alleged perpetrator.

There are four likely outcomes when managing reports of sexual violence or sexual harassment:

- Managing internally
- Providing early help
- Referring to CSCS
- Reporting to the police



Whatever outcome is chosen, it will be underpinned by the principle that sexual violence and sexual harassment is never acceptable and will not be tolerated. All concerns, discussion, decisions and reasons behind decisions will be recorded either on paper or electronically.

The following situations are statutorily clear and do not allow for contrary decisions:

- A child under the age of 13 can never consent to sexual activity.
- The age of consent is 16.
- Sexual intercourse without consent is rape.
- Rape, assault by penetration and sexual assault are defined in law.
- Creating and sharing sexual photos and videos of children under 18 is illegal – including children making and sending images and videos of themselves.

Managing internally

In some cases, e.g. one-off incidents, the school may decide to handle the incident internally through behaviour and bullying policies and by providing pastoral support.

Providing early help

The school may decide that statutory interventions are not required, but that pupils may benefit from early help – providing support as soon as a problem emerges. This approach can be particularly useful in addressing non-violent harmful sexual behaviour and may prevent the escalation of sexual violence.

Referral to CSCS

If a child has been harmed, is at risk of harm or is in immediate danger, the school will make a referral to CSCS. Parents will be informed unless there is a compelling reason not to do so (if referral will place the victim at risk). This decision will be made in consultation with CSCS.

The school will not wait for the outcome of an investigation before protecting the victim and other children.

The DSL will work closely with CSCS to ensure that the school's actions do not jeopardise any investigation. Any related risk assessment will be used to inform all decisions.

If CSCS decide that a statutory investigation is not appropriate, the school will consider referring the incident again if they believe the child to be in immediate danger or at risk of harm.

If the school agrees with the decision made by CSCS, they will consider the use of other support mechanisms such as early help, pastoral support and specialist support.

Reporting to the police



Reports of rape, assault by penetration or sexual assault will be passed on to the police – even if the alleged perpetrator is under 10 years of age. Generally, this will be in parallel with referral to CSCS. The DSL and deputies will follow the local process for referral.

Parents will be informed unless there is a compelling reason not to do so. Where parents are not informed, it is essential for the school to support the child with any decision they take, in unison with CSCS and any appropriate specialist agencies.

The DSL and governing body will agree what information will be disclosed to staff and others, in particular the alleged perpetrator and their parents. They will also discuss the best way to protect the victim and their anonymity.

The DSL will be aware of local arrangements and specialist units that investigate child abuse.

In some cases, it may become clear that the police will not take further action, for whatever reason. In these circumstances, the school will continue to engage with specialist support for the victim as required.

Bail conditions

Police bail is only used in exceptional circumstances. It is unlikely that a child will be placed on police bail if alternative measures can be used to mitigate risks.

The school will work with CSCS and the police to support the victim, alleged perpetrator and other children (especially witnesses) during criminal investigations. The school will seek advice from the police to ensure they meet their safeguarding responsibilities.

The term ‘released under investigation’ (RUI) is used to describe alleged perpetrators released in circumstances that do not warrant the application of bail.

Where bail is deemed necessary, the school will work with CSCS and the police to safeguard children – ensuring that the victim can continue in their normal routine and continue to receive a suitable education.

Managing delays in the criminal justice system

The school will not wait for the outcome (or even the start) of criminal proceedings before protecting the victim, alleged perpetrator and other children. The associated risk assessment will be used to inform any decisions made.

The DSL will work closely with the police to ensure the school does not jeopardise any criminal proceedings, and to obtain help and support as necessary.

The end of the criminal process

Risk assessments will be updated if the alleged perpetrator receives a caution or is convicted. If the perpetrator remains in the same school as the victim, the school will set out clear



expectations regarding the perpetrator, including their behaviour and any restrictions deemed reasonable and proportionate with regards to the perpetrator's timetable.

The school will ensure that the victim and perpetrator remain protected from bullying and harassment (including online).

Where an alleged perpetrator is found not guilty or a case is classed as requiring "no further action", the school will offer support to the victim and alleged perpetrator for as long as is necessary. The victim is likely to be traumatised and the fact that an allegation cannot be substantiated does not necessarily mean that it was unfounded. The school will discuss decisions with the victim and offer support.

The alleged perpetrator is also likely to require ongoing support, as they have also been through a difficult and upsetting experience.

Ongoing support for the victim

Any decisions regarding safeguarding and supporting the victim will be made with the following considerations in mind:

- The terminology the school uses to describe the victim
- The age and developmental stage of the victim
- The needs and wishes of the victim
- Whether the victim wishes to continue in their normal routine
- The victim will not be made to feel ashamed about making a report
- What a proportionate response looks like

Victims may not disclose the whole picture immediately and they may be more comfortable talking about the incident on a piecemeal basis; therefore, a dialogue will be kept open and the victim can choose to appoint a designated trusted adult.

Victims may struggle in a normal classroom environment. Whilst it is important not to isolate the victim, the victim may wish to be withdrawn from lessons and activities at times. This will only happen when the victim wants it to, not because it makes it easier to manage the situation.

The school will provide a physical space for victims to withdraw to.

Victims may require support for a long period of time and the school will be prepared to offer long-term support in liaison with relevant agencies.

Everything possible will be done to prevent the victim from bullying and harassment as a result of any report they have made.



If the victim is unable to remain in the school, alternative provision or a move to another school will be considered – this will only be considered at the request of the victim and following discussion with their parents.

If the victim does move to another school, the DSL will inform the school of any ongoing support needs and transfer the child protection file.

Ongoing support for the alleged perpetrator

When considering the support required for an alleged perpetrator, the school will take into account:

- The terminology they use to describe the alleged perpetrator or perpetrator.
- The balance of safeguarding the victim and providing the alleged perpetrator with education and support.
- The reasons why the alleged perpetrator may have abused the victim – and the support necessary.
- Their age and developmental stage.
- What a proportionate response looks like.

Whether the behaviour is a symptom of their own abuse or exposure to abusive practices and/or materials.

When making a decision, advice will be taken from CSCS, specialist sexual violence services and the police as appropriate.

If the alleged perpetrator moves to another school (for any reason), the DSL will inform the destination school of any ongoing support needs and transfer the child protection file.

The school will work with professionals as required to understand why the abuse took place and provide a high level of support to help the pupil understand and overcome the reasons for their behaviour and reduce the likelihood of them abusing again.

Disciplining the alleged perpetrator

Disciplinary action can be taken whilst investigations are ongoing and the fact that investigations are ongoing does not prevent the school reaching its own conclusion and imposing an appropriate penalty.

The school will make such decisions on a case-by-case basis, with the DSL taking a leading role. The school will take into consideration whether any action would prejudice an investigation and/or subsequent prosecution. The police and CSCS will be consulted where necessary.

The school will also consider whether circumstances make it unreasonable or irrational for the school to make a decision about what happened while an investigation is considering the same facts.



Disciplinary action and support can take place at the same time.

The school will be clear whether action taken is disciplinary, supportive or both.

Shared classes

Once the DSL has decided to progress a report, they will again consider whether the victim and alleged perpetrator will be separated in classes, on school premises and on school transport – balancing the school's duty to educate against its duty to safeguard. The best interests of the pupil will always come first.

Where there is a criminal investigation into rape or assault by penetration, the alleged perpetrator will be removed from classes with the victim and potential contact on school premises and transport will be prevented.

Where a criminal investigation into rape or assault by penetration leads to a conviction or caution, in all but the most exceptional circumstances, this will constitute a serious breach of discipline and result in the view that allowing the perpetrator to remain in the school would harm the education or welfare of the victim and potentially other pupils.

Where a criminal investigation into sexual assault leads to a conviction or caution, the school will consider suitable sanctions and permanent exclusion. If the perpetrator will remain at the school, the school will keep the victim and perpetrator in separate classes and manage potential contact on school premises and transport. The nature of the conviction or caution, alongside the wishes of the victim, will inform any discussions made.

Where a report of sexual assault does not lead to a police investigation, this does not mean that the offence did not happen or that the victim has lied. Both the victim and alleged perpetrator will be affected and appropriate support will be provided. Considerations regarding sharing classes and potential contact will be made on a case-by-case basis.

In all cases, the school will record its decisions and be able to justify them. The needs and wishes of the victim will always be at the heart of the process.

Working with parents and carers

In most sexual violence cases, the school will work with the parents of both the victim and alleged perpetrator. For cases of sexual harassment, these decisions will be made on a case-by-case basis.

The school will meet the victim's parents with the victim present to discuss the arrangements being put in place to safeguard the victim, and to understand their wishes in terms of support arrangements and the progression of the report.

Schools will also meet with the parents of the alleged perpetrator to discuss arrangements that will impact their child, such as moving them out of classes with the victim. Reasons behind



decisions will be explained and the support being made available will be discussed. The DSL or a deputy will attend such meetings, with agencies invited as necessary.

Clear policies regarding how the school will handle reports of sexual violence and how victims and alleged perpetrators will be supported will be made available to parents.

Safeguarding other children

Children who have witnessed sexual violence, especially rape and assault by penetration, will be provided with support.

It is likely that children will “take sides” following a report, and the school will do everything in its power to protect the victim, alleged perpetrator and witnesses from bullying and harassment.

The school will keep in mind that contact may be made between the victim and alleged perpetrator and that harassment from friends of both parties could take place via social media and do everything in its power to prevent such activity.

As part of the school’s risk assessment following a report, transport arrangements will be considered, as it is a potentially vulnerable place for both a victim and alleged perpetrator. Schools will consider any additional support that can be put in place.

Specific Safeguarding issues.

There are certain specific safeguarding issues that can put children at risk of harm – staff will be aware of these issues.

Appendix d of this policy sets out details about specific safeguarding issues that pupils may experience and outlines specific actions that would be taken in relation to individual issues.

Communication and confidentiality

All child protection and safeguarding concerns will be treated in the strictest of confidence in accordance with school data protection policies.

Where there is an allegation or incident of sexual abuse or violence, the victim is entitled to anonymity by law; therefore, the school will consult its policy and agree on what information will be disclosed to staff and others, in particular the alleged perpetrator and their parents.

Where a report of sexual violence or sexual harassment is progressing through the criminal justice system, the school will do all it can to protect the anonymity of the pupils involved in the case.

Concerns will only be reported to those necessary for its progression and reports will only be shared amongst staff members and with external agencies on a need-to-know basis.



During the disclosure of a concern by a pupil, staff members will not promise the pupil confidentiality and will ensure that they are aware of what information will be shared, with whom and why.

Where it is in the public interest, and protects pupils from harm, information can be lawfully shared without the victim's consent, e.g. if doing so would assist the prevention, detection or prosecution of a serious crime.

Before doing so, the DSL will weigh the victim's wishes against their duty to protect the victim and others.

Where a referral is made against the victim's wishes, it is done so carefully with the reasons for the referral explained to the victim and specialist support offered.

Depending on the nature of a concern, the DSL will discuss the concern with the parents of the pupils involved.

Discussions with parents will not take place where they could potentially put a pupil at risk of harm.

Discussion with the victim's parents will relate to the arrangements being put in place to safeguard the victim, with the aim of understanding their wishes in terms of support arrangements and the progression of the report.

Discussion with the alleged perpetrator's parents will have regards to the arrangements that will impact their child, such as moving classes, etc., with the reasons behind decisions being explained and the available support discussed.

External agencies will be invited to these discussions where necessary.

Where confidentiality or anonymity has been breached, the school will implement the appropriate disciplinary procedures as necessary and will analyse how damage can be minimised and future breaches be prevented.

Where a pupil is leaving the school, the DSL will consider whether it is appropriate to share any information with the pupil's new provider, in addition to the child protection file, that will allow the new provider to support the pupil and arrange appropriate support for their arrival.



Online safety

As part of a broad and balanced curriculum, all pupils will be made aware of online risks and taught how to stay safe online.

Through training, all staff members will be made aware of the following:

- Pupil attitudes and behaviours which may indicate they are at risk of potential harm online
- The procedure to follow when they have a concern regarding a pupil's online activity

The school will ensure that suitable filtering systems are in place to prevent children accessing terrorist and extremist material, in accordance with the school's Data and E-Security Breach Prevention and Management Plan.

The use of mobile phones by staff and pupils is closely monitored by the school, in accordance with the Staff ICT and Electronic Devices policy.

The school will ensure that the use of filtering and monitoring systems does not cause "over blocking" which may lead to unreasonable restrictions as to what pupils can be taught regarding online teaching.

Further information regarding the school's approach to online safety can be found in the Online Safety Policy.

Where pupils need to learn online from home, the school will support them to do so safely in line with the Pupil Remote Learning Policy and government [guidance](#).

Staff will be aware of the filtering systems in place and will know how to escalate concerns where they are identified. These will be shared with parents and school will reinforce importance of online safety at home.

Mobile phone and camera safety

Staff members will not use personal mobile phones or cameras when pupils are present.

Staff may use mobile phones on school premises outside of working hours when no pupils are present.

Staff may use mobile phones in the staffroom during breaks and non-contact time.

Mobile phones will be safely stored and in silent mode whilst pupils are present.

Staff will use their professional judgement in emergency situations.

Staff may take mobile phones on trips, but they must only be used in emergencies and should not be used when pupils are present.

Mobile devices will not be used to take images or videos of pupils or staff in any circumstances.



The sending of inappropriate messages or images from mobile devices is strictly prohibited.

Staff who do not adhere to this policy will face disciplinary action.

Edutech our ICT technicians and the e-safety lead, Bev Oakley will review and authorise any downloadable apps – no apps or programmes will be downloaded without express permission from an Edutech or Bev Oakley.

The school will adhere to the terms of the E-Safety Policy at all times.

Photographs and videos of pupils will be carefully planned before any activity with particular regard to consent and adhering to the school's Data Protection Policy.

The DPO will oversee the planning of any events where photographs and videos will be taken.

Where photographs and videos will involve LAC pupils, adopted pupils, or pupils for whom there are security concerns, the DSL will liaise with the DDSL to determine the steps involved.

The DSL will, in known cases of a pupil who is a LAC or who has been adopted, liaise with the pupil's social worker, carers or adoptive parents to assess the needs and risks associated with the pupil.

The school will adhere to its Photography Policy at all times.

Staff will report any concerns about another staff member's use of mobile phones to the DSL, following the procedures outlined in the Child Protection and Safeguarding Policy and the Allegations of Abuse Against Staff Policy.

Upskirting

Under the Voyeurism (Offences) Act 2019, it is an offence to operate equipment and to record an image beneath a person's clothing without consent and with the intention of observing, or enabling another person to observe, the victim's genitals or buttocks (whether exposed or covered with underwear), in circumstances where their genitals, buttocks or underwear would not otherwise be visible, for a specified purpose.

A "specified purpose" is namely:

- Obtaining sexual gratification (either for themselves or for the person they are enabling to view the victim's genitals, buttocks or underwear).
- To humiliate, distress or alarm the victim.

"Operating equipment" includes enabling, or securing, activation by another person without that person's knowledge, e.g. a motion-activated camera.

Upskirting will not be tolerated by the school.

Any incidents of upskirting will be reported to the DSL who will then decide on the next steps to take, which may include police involvement.



Sports clubs and extracurricular activities

Clubs and extracurricular activities hosted by external bodies, e.g. charities or companies, will work in collaboration with the school to effectively safeguard pupils and adhere to local safeguarding arrangements.

Paid and volunteer staff running sports clubs and extracurricular activities are aware of their safeguarding responsibilities and promote the welfare of pupils.

Paid and volunteer staff understand how they should respond to child protection concerns and how to make a referral to CSCS or the police, if necessary.

All national governing bodies of sport that receive funding from either Sport England or UK Sport, must aim to meet the Standards for Safeguarding and Protecting Children in Sport.

Safer recruitment

An enhanced DBS check with barred list information will be undertaken for all staff members engaged in regulated activity. A person will be considered to be in 'regulated activity' if, as a result of their work, they:

- Are responsible on a daily basis for the care or supervision of children.
- Regularly work in the school at times when children are on the premises.
- Regularly come into contact with children under 18 years of age.

The DfE's [DBS Workforce Guides](#) will be consulted when determining whether a position fits the child workforce criteria.

Pre-employment checks

The governing board will assess the suitability of prospective employees by:

Verifying the candidate's identity, preferably from the most current photographic ID and proof of address except where, for exceptional reasons, none is available.

Obtaining a certificate for an enhanced DBS check with barred list information where the person will be engaged in regulated activity.

Obtaining a separate barred list check if an individual will start work in regulated activity before the DBS certificate is available.

Checking that a candidate to be employed as a teacher is not subject to a prohibition order issued by the Secretary of State, using the [TRA Teacher Services' System](#).

Verifying the candidate's mental and physical fitness to undertake their working responsibilities, including asking relevant questions about disability and health to establish whether they have the physical and mental capacity for the specific role.



Checking the person's right to work in the UK. If there is uncertainty about whether an individual needs permission to work in the UK, the advice set out on the [Gov.UK](https://www.gov.uk) website will be followed.

If the person has lived or worked outside the UK, making any further checks that the school considers appropriate; this includes checking for any teacher sanctions or restrictions that an EEA professional regulating authority has imposed.

Checking professional experience, QTS and qualifications as appropriate using Teacher Services.

Confirming that an individual taking up a management position is not subject to a section 128 direction.

An enhanced DBS certificate will be obtained from candidates before or as soon as practicable after appointment. An online update check may be undertaken through the DBS update service if an applicant has subscribed to it and gives their permission.

Internal candidates

References from internal candidates will always be scrutinised before appointment.

ITT candidates

Where applicants for ITT are salaried by the school, the school will ensure that enhanced DBS checks with barred list information are carried out.

Written confirmation will be obtained to ensure that an enhanced DBS certificate and barred list check has been carried out for all fee-funded trainees.

Governors

The trust requires enhanced DBS checks on all members of the academy trust.

Where a trustee also engages in any regulated activity, a barred list check will also be requested.

An additional check is required for those in management positions, to ensure that they are not prohibited under section 128 provisions. Where a barred list check has been performed, the section 128 direction will also be shown and will not require a separate check.

If the individual lives or has lived outside of the UK, consideration will be given as to further checks that may be necessary.

The chair of trustees will complete a suitability check with the ESFA as soon as they are appointed.

To process a suitability check, the chair of governors will provide the EFSA with:



Information about their identity verified by a recognised professional, using the EFSA's [verification form](#).

Information confirming their right to work in the UK.

The outcome of an enhanced DBS check.

Overseas criminal records check or certificate of good character if they have lived outside of the UK.

Those who have lived or worked outside of the UK

For those who have lived or worked outside of the UK, additional checks regarding teacher sanctions or restrictions will be conducted, this includes checking for any teacher sanctions or restrictions that an EEA professional regulating authority has imposed.

Barred list check

An enhanced DBS check may be requested for anyone working in school that is not in regulated activity but does not have a barred list check.

If there are concerns about an applicant, an enhanced DBS check with barred list information may be requested, even if they have worked in regulated activity in the three months prior to appointment.

Written information about their previous employment history will be obtained from candidates and the appropriate checks undertaken to ensure information is not contradictory or incomplete.

References

References will be obtained directly from referees and scrutinised, with all concerns satisfactorily resolved prior to confirmation of employment.

References will only be accepted from a senior person and not from a colleague.

References will be sought on all short-listed candidates, including internal ones, before an interview and checked on receipt to ensure that all specific questions were answered satisfactorily.

References will be obtained prior to interviews taking place and discussed during interviews.

Open testimonials will not be considered.

Information about past disciplinary actions or allegations will be considered carefully when assessing an applicant's suitability for a post.

Information sourced directly from a candidate or online source will be carefully vetted to ensure they originate from a credible source.



Volunteers

No volunteer will be left unsupervised with a pupil or allowed to work in regulated activity until the necessary checks have been obtained.

An enhanced DBS certificate with barred list check will be obtained for all new volunteers in regulated activity that will regularly teach or look after children on an unsupervised basis or provide personal care on a one-off basis.

Personal care includes helping a child with eating and drinking for reasons of illness, or care in connection with toileting, washing, bathing and dressing for reasons of age, illness or disability.

A supervised volunteer who regularly teaches or looks after children is not in regulated activity.

The school will obtain an enhanced DBS certificate with barred list check for existing volunteers that provide pastoral care.

Unless there is cause for concern, the school will not request any new DBS certificates with barred list check for existing volunteers that have already been checked.

A risk assessment will be undertaken for volunteers not engaged in regulated activity when deciding whether to seek an enhanced DBS check.

Associate members

Associate members (i.e. individuals that are appointed by the governing board to serve on one or more committees) will not be required to obtain enhanced DBS checks.

Contractors

The school will ensure that any contractor or employee of the contractor working on the premises has been subject to the appropriate level of DBS check.

Checks will be conducted to ensure that the contractor presenting themselves for work is the same person on whom the checks have been made.

Contractors without a DBS check will be supervised if they will have contact with children. The identity of the contractor will be checked upon their arrival at the school.

Data retention

DBS certificates will be securely destroyed as soon as practicable, but not retained for longer than six months from receipt.

A copy of the other documents used to verify the successful candidate's identity, right to work and required qualifications will be kept for the personnel file. The personnel file will be held for the duration of the employee's employment plus six years.



Referral to the DBS

The school will refer to the DBS anyone who has harmed a child or poses a risk of harm to a child, or if there is reason to believe the member of staff has committed an offence and has been removed from working in regulated activity. The duty will also apply in circumstances where an individual is deployed to another area of work that is not in regulated activity or they are suspended.

Ongoing suitability

Following appointment, consideration will be given to staff and volunteers' ongoing suitability – to prevent the opportunity for harm to children or placing children at risk.

Single central record (SCR)

The school keeps an SCR which records all staff, including supply staff and teacher trainees on salaried routes, who work at the school.

All members of the proprietor body are also recorded on the SCR.

The following information is recorded on the SCR:

- An identity check
- A barred list check
- An enhanced DBS check
- A prohibition from teaching check
- A section 128 check
- A check of professional qualifications
- A check to determine the individual's right to work in the UK
- Additional checks for those who have lived or worked outside of the UK

For agency and third-party supply staff, the school will also record whether written confirmation from the employment business supplying the member of staff has been received which indicates that all the necessary checks have been conducted and the date that confirmation was received.

If any checks have been conducted for volunteers, this will also be recorded on the SCR.

If risk assessments are conducted to assess whether a volunteer should be subject to an enhanced DBS check, the risk assessment will be recorded.

Staff suitability

All centres providing care for pupils under the age of eight must ensure that staff and volunteers working in these settings are not disqualified from doing so under the Childcare



(Disqualification) and Childcare (Early Years Provision Free of Charge) (Extended Entitlement) (Amendment) Regulations 2018.

A person may be disqualified if they:

- Have certain orders or other restrictions placed upon them.
- Have committed certain offences.

All staff members are required to sign the [declaration form](#) provided in the appendices of this policy confirming that they are not disqualified from working in a schooling environment.

A disqualified person will not be permitted to continue working at the school, unless they apply for and are granted a waiver from Ofsted. The school will provide support with this process.

Training

Staff members will undergo safeguarding and child protection training at induction, which will be regularly updated on a termly basis or whenever there is a change in legislation.

The induction training will cover:

- The Child Protection and Safeguarding Policy
- The Behavioural Policy
- The Staff Code of Conduct
- The safeguarding response to children who go missing from education
- The identity of the DSL and any deputies
- The role of the DSL and deputy DSLs

All staff members will also receive regular safeguarding and child protection updates as required, but at least annually.

Training will cover, at a minimum:

- The issues surrounding sexual violence and sexual harassment.
- Contextual safeguarding.
- How to keep previously LAC safe.
- Child criminal exploitation and the need to refer cases to the National Referral Mechanism.

Staff will receive opportunities to contribute towards and inform the safeguarding arrangements in the school.

The DSL and deputy DSL will undergo updated child protection training every two years, as well as additional training to refresh their skills and knowledge at regular intervals (at least annually) to allow them to keep up-to-date with any developments relevant to their role.



The DSL and deputy DSL will also undergo biennial Prevent awareness training which will enable them to understand and support the school with regards to the Prevent duty and equip them with the knowledge needed to advise staff.

The DSL and their deputy(s) will undergo online safety training to help them recognise the additional risks that pupils with SEND face online, for example, from online bullying, grooming and radicalisation, to ensure they have the capability to support pupils with SEND to stay safe online

Online training will also be conducted for all staff members as part of the overall safeguarding approach.

Monitoring and review

This policy is reviewed annually by the Headteacher and the DSL

Any changes made to this policy will be communicated to all members of staff.

All members of staff are required to familiarise themselves with all processes and procedures outlined in this policy as part of their induction programme.



Staff Disqualification Declaration

Name of school:	
Name of staff member:	Position:
Orders and other restrictions	Yes/No
Have any orders or other determinations related to childcare been made in respect of you?	
Have any orders or other determinations related to childcare been made in respect of a child in your care?	
Have any orders or other determinations been made which prevent you from being registered in relation to childcare, children's homes or fostering?	
Are there any other relevant orders, restrictions or prohibitions in respect of you as set out in Schedule 1 of the Childcare (Disqualification) and Childcare (Early Years Provision Free of Charge) (Extended Entitlement) (Amendment) Regulations 2018?	
Are you barred from working with children by the DBS?	
Are you prohibited from teaching?	
Specified and statutory offences	
Have you ever been cautioned, reprimanded, given a warning for or convicted of:	
Any offence against or involving a child?	
Any violent or sexual offence against an adult?	
Any offence under The Sexual Offences Act 2003?	
Any other relevant offence?	
Have you ever been cautioned, reprimanded for or convicted of a similar offence in another country?	
Provision of information	
If you have answered yes to any of the questions above, provide details below. You may provide this information separately, but you must do so without delay.	
Details of the order restriction, conviction or caution:	
The date(s) of the above:	
The relevant court(s) or body/bodies):	



You should also provide a copy of the relevant order, caution, conviction, etc. In relation to cautions/convictions, a DBS Certificate may be provided.

Declaration

In signing this form, I confirm that the information provided is true to the best of my knowledge and that:

I understand my responsibilities to safeguard children.

I understand that I must notify my headteacher immediately of anything that affects my suitability to work within the school. This includes any cautions, warnings, convictions, orders or other determinations made in respect of me that would render me disqualified from working with children.

Signed:

Print name:

Date:

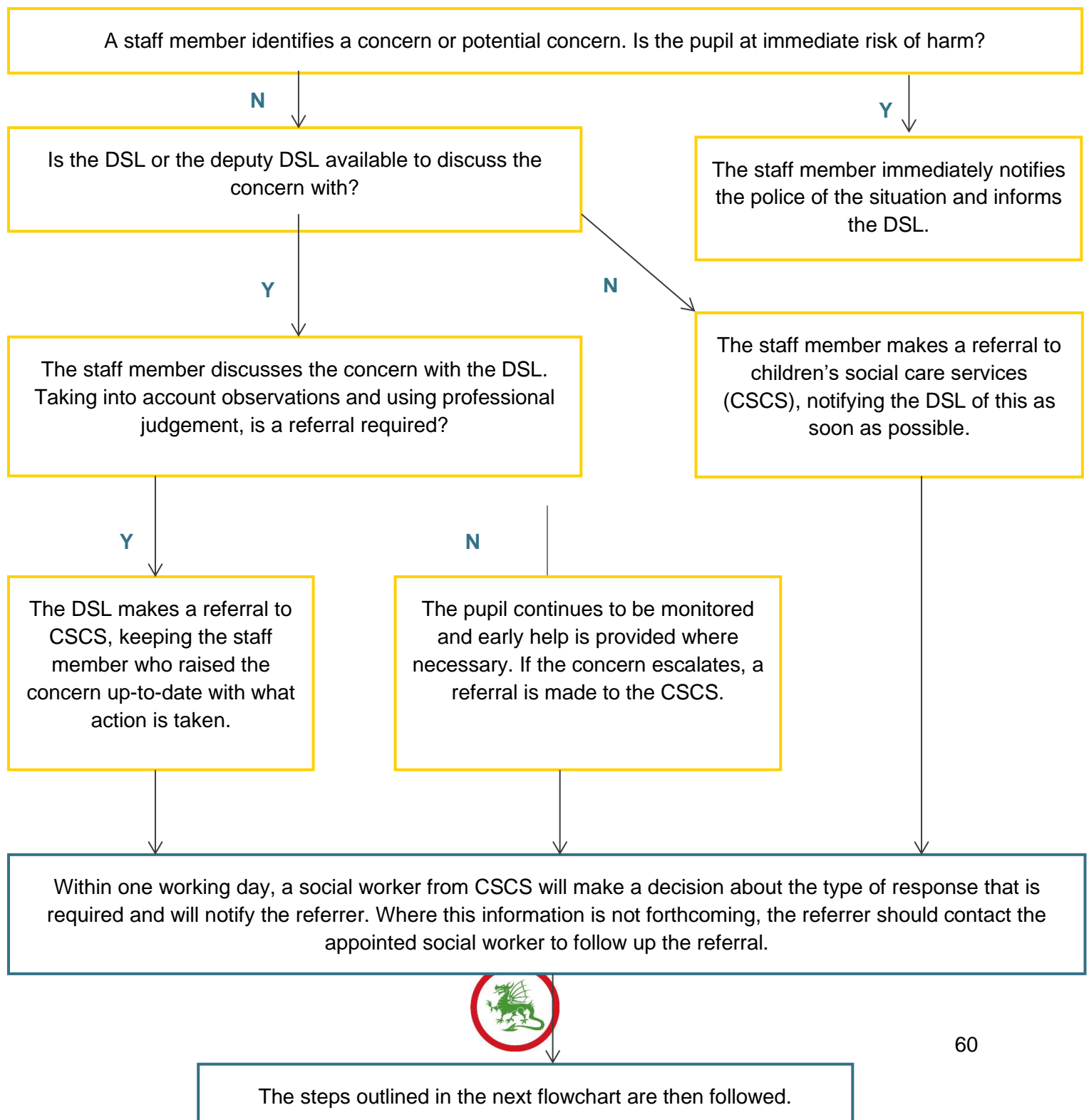


Safeguarding Reporting Process

The process outlined within the first section should be followed where a staff member has a safeguarding concern about a child. Where a referral has been made, the process outlined in the 'After a referral is made' section should be followed.

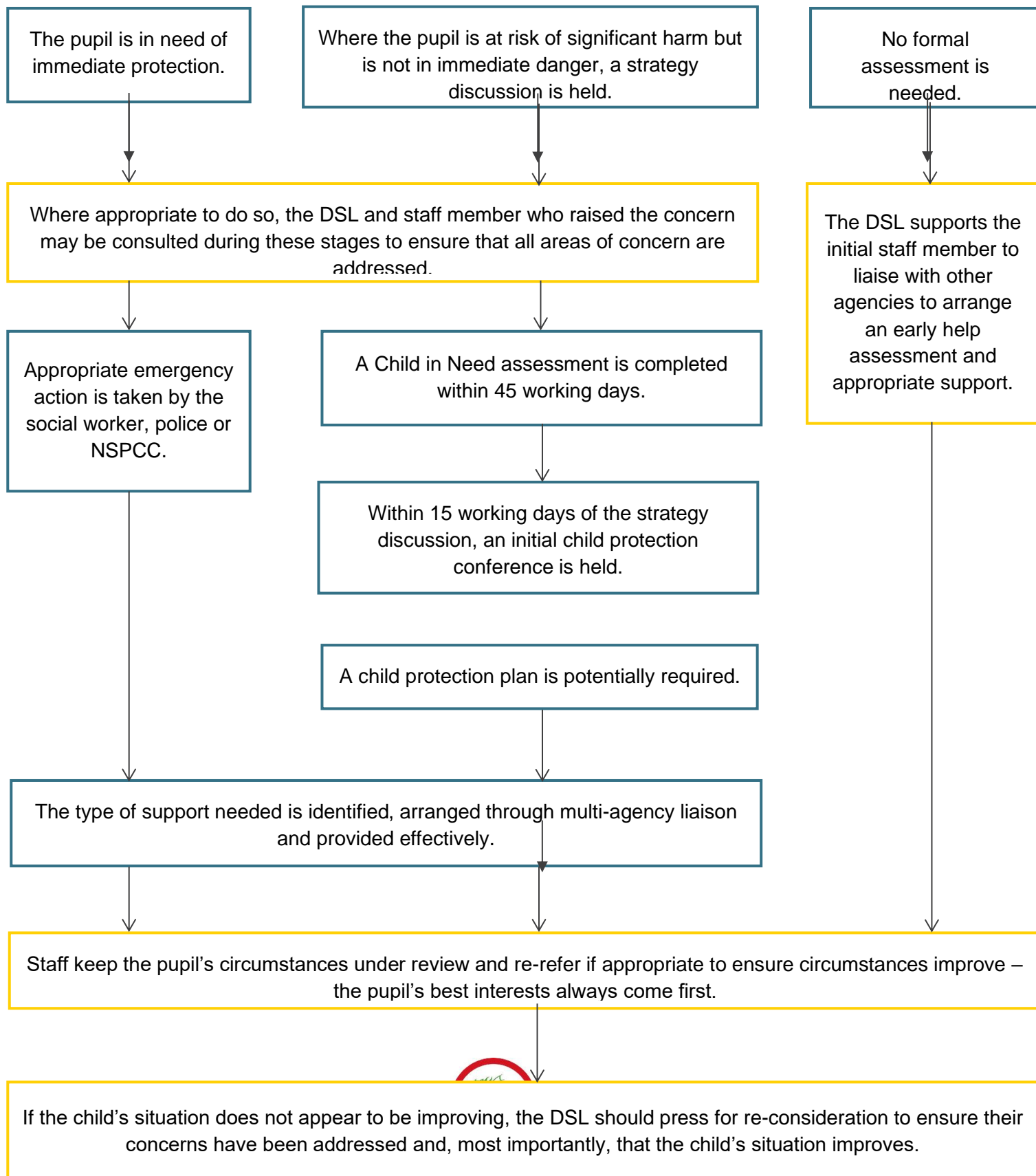
The actions taken by the school are outlined in yellow, whereas actions taken by another agency are outlined in blue.

Before a referral is made



After a referral is made

Once a referral has been made, a social worker from CSCS will notify the referrer that a decision has been made and one of the following responses will be actioned.



Specific safeguarding issues

This appendix sets out details about specific safeguarding issues that pupils may experience and outlines specific actions that would be taken in relation to individual issues.

Here are the issues covered:

[Domestic abuse](#)

[Homelessness](#)

[Children missing from education](#)

[Child abduction and community safety incidents](#)

[Child criminal exploitation \(CCE\)](#)

[Cyber-crime](#)

[Child sexual exploitation \(CSE\)](#)

[Modern slavery](#)

[FGM](#)

[Virginity testing and hymenoplasty](#)

[Forced marriage](#)

[Radicalisation](#)

[Pupils with family members in prison](#)

[Pupils required to give evidence in court](#)

[Mental health](#)

[Serious violence](#)

Domestic abuse

For the purposes of this policy, and in line with the Domestic Abuse Act 2021, **“domestic abuse”** is defined as abusive behaviour of a person towards another person (including conduct directed at someone else, e.g. the person’s child) where both are aged 16 or over and are personally connected. **“Abusive behaviour”** includes physical or sexual abuse, violent or threatening behaviour, controlling or coercive behaviour, economic abuse, psychological or emotional abuse, or another form of abuse. **“Personally connected”** includes people who:

Are, have been, or have agreed to be married to each other.

Are, have been, or have agreed to be in a civil partnership with each other.

Are, or have been, in an intimate personal relationship with each other.



Each have, or had, a parental relationship towards the same child.

Are relatives.

The school will recognise the impact of domestic abuse on children, as victims in their own right, if they see, hear or experience the effects of domestic abuse. All staff will be aware of the signs of domestic abuse and follow the appropriate safeguarding procedures where concerns arise.

LGBTQ+ pupils

The fact that a pupil may be LGBTQ+ is not in itself an inherent risk factor for harm; however, staff will be aware that LGBTQ+ pupils can be targeted by other individuals. Staff will also be aware that, in some cases, a pupil who is perceived by others to be LGBTQ+ (whether they are or not) can be just as vulnerable as pupils who identify as LGBTQ+.

Staff will also be aware that the risks to these pupils can be compounded when they do not have a trusted adult with whom they can speak openly with. Staff will endeavour to reduce the additional barriers faced by these pupils and provide a safe space for them to speak out and share any concerns they have.

Homelessness

The DSL and deputy DSLs will be aware of the contact details and referral routes into the Local Housing Authority so that concerns over homelessness can be raised as early as possible.

Indicators that a family may be at risk of homelessness include:

Household debt.

Rent arrears.

Domestic abuse.

Anti-social behaviour.

Any mention of a family moving home because “they have to”.

Referrals to the Local Housing Authority do not replace referrals to CSCS where a child is being harmed or at risk of harm. For 16- and 17-year-olds, homelessness may not be family-based and referrals to CSCS will be made as necessary where concerns are raised.

Children missing from education

A child going missing from school is a potential indicator of abuse or neglect and, as such, these children are increasingly at risk of being victims of harm, exploitation or radicalisation. Staff will monitor pupils that go missing from the school, particularly on repeat occasions, and report them to the DSL following normal safeguarding procedures, in accordance with the Children



Missing Education Policy. The school will inform the LA of any pupil who fails to attend regularly or has been absent without the school's permission for a continuous period of 10 school days or more.

Admissions register

Pupils are placed on the admissions register at the beginning of the first day that is agreed by the school, or when the school has been notified that the pupil will first be attending. The school will notify the LA within 5 days of when a pupil's name is added to the admissions register.

The school will ensure that the admissions register is kept up-to-date and accurate at all times and will inform parents when any changes occur. Two emergency contacts will be held for each pupil where possible. Staff will monitor pupils who do not attend the school on the agreed date and will notify the LA at the earliest opportunity.

If a parent notifies the school that their child will live at a different address, the school will record the following information on the admissions register:

- The full name of the parent with whom the pupil will live
- The new address
- The date from when the pupil will live at that address

If a parent notifies the school that their child will be attending a different school, or is already registered at a different school, the following information will be recorded on the admissions register:

- The name of the new school
- The date on which the pupil first attended, or is due to attend, that school
- Where a pupil moves to a new school, the school will use a secure internet system to securely transfer pupils' data.

To ensure accurate data is collected to allow effective safeguarding, the school will inform the LA of any pupil who is going to be deleted from the admission register, in accordance with the Education (Pupil Registration) (England) Regulations 2006 (as amended), where they:

- Have been taken out of the school by their parents, and are being educated outside the national education system, e.g. home education.
- Have ceased to attend the school, and no longer live within a reasonable distance of the premises.
- Have been certified by the school's medical officer as unlikely to be in a fit state of health to attend, before ceasing to be of compulsory school age, and their parent has not indicated the intention to the pupil continuing to attend school after ceasing to be of compulsory school age.



- Have been in custody for a period of more than four months due to a final court order and the school does not reasonably believe they will be returning to the school at the end of that period.
- Have been permanently excluded.

The school will also remove a pupil from the admissions register where the school and LA has been unable to establish the pupil's whereabouts after making reasonable enquiries into their attendance.

If a pupil is to be removed from the admissions register, the school will provide the LA with the following information:

- The full name of the pupil
- The full name and address of any parent with whom the pupil lives
- At least one telephone number of the parent with whom the pupil lives
- The full name and address of the parent with whom the pupil is going to live, and the date that the pupil will start living there, if applicable
- The name of the pupil's new school and the pupil's expected start date there, if applicable
- The grounds for removal from the admissions register under regulation 8 of the Education (Pupil Registration) (England) Regulations 2006 (as amended)

The school will work with the LA to establish methods of making returns for pupils back into the school. The school will highlight to the LA where they have been unable to obtain necessary information from parents, e.g. where an address is unknown. The school will also highlight any other necessary contextual information, including safeguarding concerns.

Child abduction and community safety incidents

For the purposes of this policy, **“child abduction”** is defined as the unauthorised removal or retention of a child from a parent or anyone with legal responsibility for the child. Child abduction can be committed by parents and other relatives, other people known to the victim, and strangers.

All staff will be alert to community safety incidents taking place in the vicinity of the school that may raise concerns regarding child abduction, e.g. people loitering nearby or unknown adults conversing with pupils.

Pupils will be provided with practical advice and lessons to ensure they can keep themselves safe outdoors.



Child criminal exploitation (CCE)

For the purposes of this policy, “**child criminal exploitation**” is defined as a form of abuse where an individual or group takes advantage of an imbalance of power to coerce, manipulate or deceive a child into taking part in criminal activity, for any of the following reasons:

- In exchange for something the victim needs or wants
- For the financial advantage or other advantage of the perpetrator or facilitator
- Through violence or the threat of violence
- Specific forms of CCE can include:
 - Being forced or manipulated into transporting drugs or money through county lines.
 - Working in cannabis factories.
 - Shoplifting or pickpocketing.
 - Committing vehicle crime.
 - Committing, or threatening to commit, serious violence to others.

The school will recognise that pupils involved in CCE are victims themselves, regardless of whether they have committed crimes, and even if the criminal activity appears consensual. The school will also recognise that pupils of any gender are at risk of CCE.

School staff will be aware of the indicators that a pupil is the victim of CCE, including:

- Appearing with unexplained gifts, money or new possessions.
- Associating with other children involved in exploitation.
- Suffering from changes in emotional wellbeing.
- Misusing drugs or alcohol.
- Going missing for periods of time or regularly coming home late.
- Regularly missing school or education or not taking part.

County lines

For the purposes of this policy, “**county lines**” refers to gangs and organised criminal networks exploiting children to move, store or sell drugs and money into one or more areas, locally and/or across the UK.

As well as the general indicators for CCE, school staff will be aware of the specific indicators that a pupil may be involved in county lines, including:

- Going missing and subsequently being found in areas away from their home.
- Having been the victim or perpetrator of serious violence, e.g. knife crime.
- Receiving requests for drugs via a phone line.
- Moving drugs.
- Handing over and collecting money for drugs.



- Being exposed to techniques such as ‘plugging’, where drugs are concealed internally to avoid detection.
- Being found in accommodation they have no connection with or a hotel room where there is drug activity.
- Owing a ‘debt bond’ to their exploiters.
- Having their bank account used to facilitate drug dealing.

Staff will be made aware of pupils with missing episodes who may have been trafficked for the purpose of transporting drugs. Staff members who suspect a pupil may be vulnerable to, or involved in, county lines activity will immediately report all concerns to the DSL.

The DSL will consider referral to the National Referral Mechanism on a case-by-case basis and consider involving local services and providers who offer support to victims of county lines exploitation.

Cyber-crime

For the purposes of this policy, **“cyber-crime”** is defined as criminal activity committed using computers and/or the internet. This includes ‘cyber-enabled’ crimes, i.e. crimes that can happen offline but are enabled at scale and at speed online, and ‘cyber-dependent’ crimes, i.e. crimes that can be committed only by using a computer. Crimes include:

Unauthorised access to computers, known as ‘hacking’.

Denial of Service attacks, known as ‘booting’.

Making, supplying or obtaining malicious software, or ‘malware’, e.g. viruses, spyware, ransomware, botnets and Remote Access Trojans with the intent to commit further offence.

All staff will be aware of the signs of cyber-crime and follow the appropriate safeguarding procedures where concerns arise. This may include the DSL referring pupils to the National Crime Agency’s Cyber Choices programme.

Child sexual exploitation (CSE)

For the purposes of this policy, **“child sexual exploitation”** is defined as a form of sexual abuse where an individual or group takes advantage of an imbalance of power to coerce, manipulate or deceive a child into sexual activity, for any of the following reasons:

- In exchange for something the victim needs or wants
- For the financial advantage, increased status or other advantage of the perpetrator or facilitator
- Through violence or the threat of violence

The school will recognise that CSE can occur over time or be a one-off occurrence, and may happen without the pupil’s immediate knowledge, e.g. through others sharing videos or



images of them on social media. The school will recognise that CSE can affect any pupil who has been coerced into engaging in sexual activities, even if the activity appears consensual; this includes pupils aged 16 and above who can legally consent to sexual activity. The school will also recognise that pupils may not realise they are being exploited, e.g. they believe they are in a genuine romantic relationship.

School staff will be aware of the key indicators that a pupil is the victim of CSE, including:

- Appearing with unexplained gifts, money or new possessions.
- Associating with other children involved in exploitation.
- Suffering from changes in emotional wellbeing.
- Misusing drugs or alcohol.
- Going missing for periods of time or regularly coming home late.
- Regularly missing school or education or not taking part.
- Having older partners.
- Suffering from sexually transmitted infections.
- Displaying sexual behaviours beyond expected sexual development.
- Becoming pregnant.

All concerns related to CSE will be managed in line with the school's Child Sexual Exploitation (CSE) Policy.

Where CSE, or the risk of it, is suspected, staff will discuss the case with the DSL. If after discussion a concern remains, local safeguarding procedures will be triggered, including referral to the LA. The LA and all other necessary authorities will then handle the matter to conclusion. The school will cooperate as needed.

Modern slavery

For the purposes of this policy, "**modern slavery**" encompasses human trafficking and slavery, servitude, and forced or compulsory labour. This can include CCE, CSE, and other forms of exploitation.

All staff will be aware of and alert to the signs that a pupil may be the victim of modern slavery. Staff will also be aware of the support available to victims of modern slavery and how to refer them to the National Referral Mechanism.

FGM

For the purposes of this policy, "**FGM**" is defined as all procedures involving the partial or total removal of the external female genitalia or other injury to the female genital organs. FGM is illegal in the UK and a form of child abuse with long-lasting harmful consequences.



All staff will be alert to the possibility of a pupil being at risk of FGM, or already having suffered FGM. If staff are worried about someone who is at risk of FGM or who has been a victim of FGM, they are required to share this information with CSCS and/or the police. The school's procedures relating to managing cases of FGM and protecting pupils will reflect multi-agency working arrangements.

As outlined in Section 5B of the Female Genital Mutilation Act 2003 (as inserted by section 74 of the Serious Crime Act 2015), teachers are **legally required** to report to the police any discovery, whether through disclosure by the victim or visual evidence, of FGM on a pupil under the age of 18. Teachers failing to report such cases may face disciplinary action. Teachers will not examine pupils, and so it is rare that they will see any visual evidence, but they must personally report to the police where an act of FGM appears to have been carried out. Unless the teacher has a good reason not to, they should also consider and discuss any such case with the DSL and involve CSCS as appropriate. **NB:** This does not apply to any suspected or at-risk cases, nor if the individual is over the age of 18. In such cases, local safeguarding procedures will be followed.

All staff will be aware of the indicators that pupils may be at risk of FGM. While some individual indicators they may not indicate risk, the presence of two or more indicators could signal a risk to the pupil. It is important to note that the pupil may not yet be aware of the practice or that it may be conducted on them, so staff will be sensitive when broaching the subject.

Indicators that a pupil may be at heightened risk of undergoing FGM include:

The socio-economic position of the family and their level of integration into UK society.

The pupil coming from a community known to adopt FGM.

Any girl with a mother or sister who has been subjected to FGM.

Any girl withdrawn from PSHE.

Indicators that FGM may take place soon include:

- When a female family elder is visiting from a country of origin.
- A girl confiding that she is to have a 'special procedure' or a ceremony to 'become a woman'.
- A girl requesting help from a teacher if she is aware or suspects that she is at immediate risk.
- A girl, or her family member, talking about a long holiday to her country of origin or another country where FGM is prevalent.

All staff will be vigilant to the signs that FGM has already taken place so that help can be offered, enquiries can be made to protect others, and criminal investigations can begin. Indicators that FGM may have already taken place include the pupil:



- Having difficulty walking, sitting or standing.
- Spending longer than normal in the bathroom or toilet.
- Spending long periods of time away from a classroom during the day with bladder or menstrual problems.
- Having prolonged or repeated absences from school, followed by withdrawal or depression.
- Being reluctant to undergo normal medical examinations.
- Asking for help, but not being explicit about the problem due to embarrassment or fear.

FGM is included in the definition of “**‘honour-based’ abuse (HBA)**”, which involves crimes that have been committed to defend the honour of the family and/or community. All forms of HBA are forms of abuse and will be treated and escalated as such. Staff will be alert to the signs of HBA, including concerns that a child is at risk of HBA, or has already suffered from HBA, and will consult with the DSL who will activate local safeguarding procedures if concerns arise.

Virginity testing and hymenoplasty

Under the Health and Care Act 2022, it is illegal to carry out, offer or aid and abet virginity testing or hymenoplasty in any part of the UK. It is also illegal for UK nationals and residents to do these things outside the UK.

Virginity testing - Also known as hymen, ‘2-finger’ or vaginal examination, this is defined as any examination (with or without contact) of the female genitalia intended to establish if vaginal intercourse has taken place. This is irrespective of whether consent has been given. Vaginal examination has no established scientific merit or clinical indication.

Hymenoplasty - A procedure which can involve a number of different techniques, but typically involving stitching or surgery, undertaken to reconstruct a hymen with the intent that the person bleeds the next time they have vaginal intercourse. Hymenoplasty is different to procedures that may be performed for clinical reasons, e.g. surgery to address discomfort or menstrual complications.

Virginity testing and hymenoplasty are forms of violence against women and girls and are part of the cycle of HBA, and can be precursors to child or forced marriage and other forms of family and/or community coercive behaviours, including physical and emotional control. Victims are pressurised into undergoing these procedures, often by family members or their intended husbands’ family to fulfil the requirement that a woman remains ‘pure’ before marriage. Those who ‘fail’ to meet this requirement are likely to suffer further abuse, including emotional and physical abuse, disownment and even honour killings.

The procedures are degrading and intrusive, and can result in extreme psychological trauma, provoking conditions such as anxiety, depression and PTSD, as well as physical harm and medical complications. Staff will be alert to the possible presence of stress, anxiety and other



psychological or behavioural signs, and mental health support should be made available where appropriate.

Victims face barriers in coming forward, e.g. they may not know that the abuse was abnormal or wrong at the time, and may feel shameful, having been taught that speaking out against family and/or the community is wrong, or being scared about the repercussions of speaking out. The school will educate pupils about the harms of these practices and dispel myths, e.g. the belief that virginity determines the worth of a woman, and establish an environment where pupils feel safe enough to make a disclosure.

Pupils aged 13 and older are considered to be most at risk, but it can affect those as young as 8, and anyone with female genitalia can be a victim regardless of age, gender identity, ethnicity, sexuality, religion, disability or socioeconomic status. All staff will be aware of the following indicators that a pupil is at risk of or has been subjected to a virginity test and/or hymenoplasty:

A pupil is known to have requested either procedure or asks for help

Family members disclose that the pupil has already undergone the practices

Pain and discomfort after the procedures, e.g. difficulty in walking or sitting for a long period of time which was not a problem previously

Concern from family members that the pupil is in a relationship, or plans for them to be married

A close relative has been threatened with either procedure or has already been subjected to one

A pupil has already experienced or is at risk of other forms of HBA

A pupil is already known to social services in relation to other safeguarding issues

A pupil discloses other concerns that could be an indication of abuse, e.g. they may state that they do not feel safe at home, that family members will not let them out the house and/or that family members are controlling

A pupil displays signs of trauma and an increase in emotional and psychological needs, e.g. withdrawal, anxiety, depression, or significant change in behaviour

A pupil appears fearful of their family or a particular family member

Unexplained absence from school, potentially to go abroad

Changes in behaviour, e.g. a deterioration in schoolwork, attendance, or attainment

The above list is not exhaustive, but if any of these indicators are identified, staff members will immediately raise concerns with the DSL. An assessment of the risk they face will be undertaken. If there is believed to be immediate danger, the police will be contacted without delay.



The school will not involve families and community members in cases involving virginity testing and hymenoplasty, including trying to mediate with family or using a community member as an interpreter, as this may increase the risk of harm to the pupil, including expediting arrangements for the procedure.

Forced marriage

Forced marriage is a marriage where one or both spouses do not consent to the marriage but are coerced into it. Force can be physical, psychological, financial, sexual and emotional pressure. A lack of full and free consent can be where a person does not consent or where they cannot consent, e.g. due to some forms of SEND. Where an individual lacks the capacity to consent to marriage, coercion is not required for a marriage to be forced.

All staff will be alert to the indicators that a pupil is at risk of, or has undergone, forced marriage, including, but not limited to, the pupil:

- Being absent from school – particularly where this is persistent.
- Requesting for extended leave of absence and failure to return from visits to country of origin.
- Being fearful about forthcoming school holidays.
- Being subjected to surveillance by siblings or cousins at school.
- Demonstrating a decline in behaviour, engagement, performance, exam results or punctuality.
- Being withdrawn from school by their parents.
- Being removed from a day centre when they have a physical or learning disability.
- Not being allowed to attend extracurricular activities.
- Suddenly announcing that they are engaged to a stranger, e.g. to friends or on social media.
- Having a family history of forced marriage, e.g. their older siblings have been forced to marry.
- Being prevented from going on to further or higher education.
- Showing signs of mental health disorders and behaviours, e.g. depression, self-harm, anorexia.
- Displaying a sudden decline in their educational performance, aspirations or motivation.

Staff who have any concerns regarding a pupil who may have undergone, is currently undergoing, or is at risk of forced marriage will speak to the DSL or headteacher and local safeguarding procedures will be followed – this could include referral to CSCS, the police or the Forced Marriage Unit. The DSL or headteacher will ensure the pupil is spoken to privately about these concerns and further action taken as appropriate. Pupils will always be listened to and their comments taken seriously.



It will be made clear to staff members that they should not approach the pupil's family or those with influence in the community, without the express consent of the pupil, as this will alert them to the concerns and may place the pupil in further danger.

Advice will be sought from the Forced Marriage Unit following any suspicion of forced marriage among pupils.

If a pupil is being forced to marry, or is fearful of being forced to, the school will be especially vigilant for signs of mental health disorders and self-harm. The pupil will be supported by the DSL and senior mental health lead and referrals will be made on a case-by-case basis.

Staff members will make themselves aware of how they can support victims of forced marriage in order to respond to the victims needs at an early stage, and be aware of the practical help they can offer, e.g. referral to social services and local and national support groups.

Local child safeguarding procedures will be activated following concerns regarding forced marriage – the school will use existing national and local protocols for multi-agency liaison with police and children's social care.

The school will support any victims to seek help by:

- Making them aware of their rights and choices to seek legal advice and representation.
- Recording injuries and making referrals for medical examination where necessary.
- Providing personal safety advice.
- Developing a safety plan in case they are seen, e.g. by preparing another reason for why the victim is seeking help.
- The school will establish where possible whether pupils at risk of forced marriage have a dual nationality or two passports.

The school will aim to create an open environment where pupils feel comfortable and safe to discuss the problems they are facing – this means creating an environment where forced marriage is discussed openly within the curriculum and support and counselling are provided routinely.

The school will take a whole school approach towards educating on forced marriage in the school curriculum and environment – in particular, the school's RSHE curriculum will incorporate teaching about the signs of forced marriage and how to obtain help. Appropriate materials and sources of further support will be signposted to pupils. Pupils will be encouraged to access appropriate advice, information and support.

Teachers and other staff members will be educated through CPD about the issues surrounding forced marriage and the signs to look out for.



Radicalisation

For the purposes of this policy, “**radicalisation**” refers to the process by which a person comes to support terrorism and extremist ideologies associated with terrorist groups.

For the purposes of this policy, “**extremism**” refers to the vocal or active opposition to fundamental British values, including democracy, the rule of law, individual liberty, and the mutual respect and tolerance of different faiths and beliefs. Extremism also includes calling for the death of members of the armed forces.

For the purposes of this policy, “**terrorism**” refers to an action that endangers or causes serious violence to a person or people, serious damage to property, or seriously interferes with or disrupts an electronic system. The use or threat of these actions must be designed to influence the government or intimidate the public, and be made for the purpose of advancing a political, religious or ideological cause.

Protecting pupils from the risk of radicalisation is part of the school’s wider safeguarding duties. The school will actively assess the risk of pupils being radicalised and drawn into extremism and/or terrorism. Staff will be alert to changes in pupils’ behaviour which could indicate that they may need help or protection. Staff will use their professional judgement to identify pupils who may be at risk of radicalisation and act appropriately, which may include contacting the DSL or making a Prevent referral. The school will work with local safeguarding arrangements as appropriate.

The school will ensure that they engage with parents and families, as they are in a key position to spot signs of radicalisation. In doing so, the school will assist and advise family members who raise concerns and provide information for support mechanisms. Any concerns over radicalisation will be discussed with the pupil’s parents, unless the school has reason to believe that the child would be placed at risk as a result.

The DSL will undertake Prevent awareness training to be able to provide advice and support to other staff on how to protect pupils against the risk of radicalisation. The DSL will hold formal training sessions with all members of staff to ensure they are aware of the risk indicators and their duties regarding preventing radicalisation.

The Prevent duty

Under section 26 of the Counter-Terrorism and Security Act 2015, all schools are subject to a duty to have “due regard to the need to prevent people from being drawn into terrorism”, known as “**the Prevent duty**”. The Prevent duty will form part of the school’s wider safeguarding obligations.

The school’s procedures for carrying out the Prevent duty, including how it will engage and implement the Channel programme, are outline in the Prevent Duty Policy.



Pupils with family members in prison

Pupils with a family member in prison will be offered pastoral support as necessary. They will receive a copy of '[Are you a young person with a family member in prison?](#)' from Action for Prisoners' Families where appropriate and allowed the opportunity to discuss questions and concerns.

Pupils required to give evidence in court

Pupils required to give evidence in criminal courts, either for crimes committed against them or crimes they have witnessed, will be offered appropriate pastoral support.

Pupils will be provided with the booklet '[Going to Court](#)' from HMCTS where appropriate and allowed the opportunity to discuss questions and concerns.

Mental health

All staff will be made aware that mental health problems can, in some cases, be an indicator that a pupil has suffered, or is at risk of suffering, abuse, neglect or exploitation.

Staff will not attempt to make a diagnosis of mental health problems – the school will ensure this is done by a trained mental health professional. Staff will, however, be encouraged to identify pupils whose behaviour suggests they may be experiencing a mental health problem or may be at risk of developing one. Staff will also be aware of how pupils' experiences can impact on their mental health, behaviour, and education.

Staff who have a mental health concern about a pupil that is also a safeguarding concern will act in line with this policy and speak to the DSL or deputy DSLs.

The school will access a range of advice to help them identify pupils in need of additional mental health support, including working with external agencies.

In all cases of mental health difficulties, the school's Social, Emotional and Mental Health (SEMH) Policy will be consulted and adhered to at all times.

Serious violence

All staff will be made aware of the indicators which may signal a pupil is at risk from, or is involved with, serious violent crime. These indicators include, but are not limited to:

- Increased absence from school.
- A change in friendships.
- Relationships with older individuals or groups.
- A significant decline in academic performance.
- Signs of self-harm.



- A significant change in wellbeing.
- Signs of assault.
- Unexplained injuries.
- Unexplained gifts or new possessions.

Staff will be made aware of some of the most significant risk factors that could increase a pupil's vulnerability to becoming involved in serious violence. These risk factors include, but are not limited to:

- Being male.
- Having been frequently absent from school.
- Having been permanently excluded from school.
- Having experienced child maltreatment.
- Having been involved in offending, such as theft or robbery.

Staff members who suspect a pupil may be vulnerable to, or involved in, serious violent crime will immediately report their concerns to the DSL.

Contacts and Advice

Expert organisations

[Barnardo's](#)

[Lucy Faithfull Foundation](#)

[NSPCC](#)

[Rape Crisis](#)

[University of Bedfordshire: Contextual Safeguarding](#)

[UK Safer Internet Centre](#)

Support for victims

[Anti-Bullying Alliance](#)

[MoJ Victim Support](#)

[Rape Crisis](#)

[The Survivor's Trust](#)

[Victim Support](#)

Toolkits

[Brook](#)



[NSPCC](#)

[Safeguarding Unit, Farrer and Co, and Carlene Firmin, MBE, University of Bedfordshire](#)

Further information on confidentiality and information sharing

[Gillick Competency Fraser Guidelines](#)

[Government Information Sharing Advice](#)

[Information Commissioner's Office: Education](#)

[NSPCC: Things to Know and Consider](#)

Further information on sexting

[UK Council for Child Internet Safety: Sexting Advice](#)

[London Grid for Learning – Collection of Advice](#)

Support for parents

[Parentzone](#)

[Parentsafe – London Grid for Learning](#)

[CEOP Thinkuknow – Challenging Harmful Sexual Attitudes and their Impact](#)

[CEOP Thinkuknow – Supporting Positive Sexual Behaviour](#)

